

# Graphic Grammar reference

## Past simple: *to be* (Unit 3)

### (I / you)

? Where were you yesterday ?

+ I was at home .

- I was not at school .  
I wasn't at school .

? Were you at home ?

Yes , I was .

Were you at school ?

No , I wasn't .



### (he / she)

? Where was he yesterday ?



+ He was at the library .

- He was not at home .  
He wasn't at home .

? Was he at the library ?

Yes , he was .

Was he at home ?

No , he wasn't .

(they)

? Where were they yesterday ?

+ They were at the bank .



- They were not at the café .

They weren't at the café .

? Were they at the bank ?

Yes , they were .

Were they at the café ?

No , they weren't .

There was ... / There were ... (Unit 8)



+ There was a table .

- There wasn't an armchair .

There were some bowls .

There weren't any clocks .

? Was there a table ?

Yes , there was .

Was there an armchair ?

No , there wasn't .

Were there any bowls ?

Yes , there were .

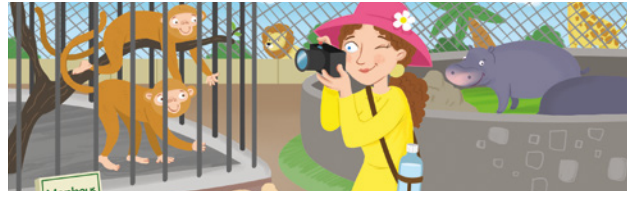
Were there any clocks ?

No , there weren't .

## Past simple, regular and irregular verbs (Units 5 and 7)

(I / you)

? Where did you go yesterday ?



+ I went to the zoo . - I did not go to the museum .  
I didn't go to the museum .

? Did you go to the zoo ?

Yes , I did .

Did you go to the museum ?

No , I didn't .

(he /she)

? What did he play yesterday ?



+ He played the drums . - He did not play the violin .  
He didn't play the violin .

? Did he play the drums ?

Yes , he did .

Did he play the violin ?

No , he didn't .

## going to (Unit 10)

### (I / you)

+ I am going to paint a flower .  
I'm going to paint a flower .

- I am not going to paint a tree .  
I'm not going to paint a tree .



? Are you going to paint a flower ?

Yes , I am .

Are you going to paint a tree ?

No , I'm not .

### (he / she)

+ She is going to play baseball .  
She's going to play baseball .

- She is not going to play tennis .  
She isn't going to play tennis .



? Is she going to play baseball ?

Yes , she is .

Is she going to play tennis ?

No , she isn't .