

Spanish

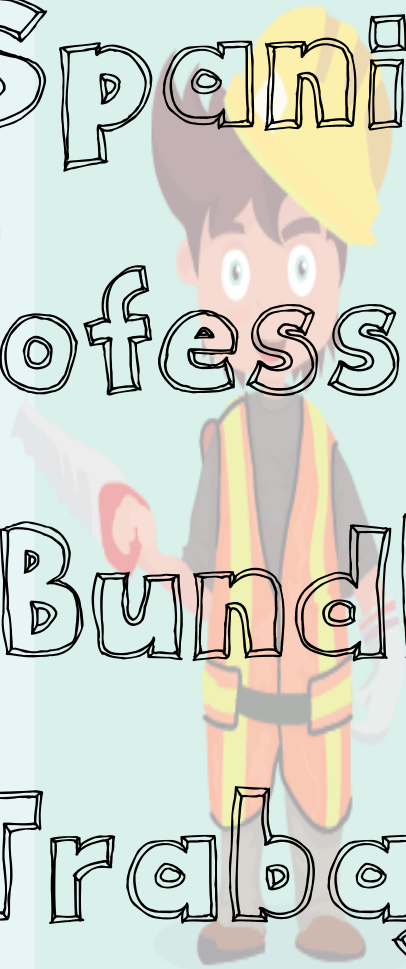
Professions

Bundle

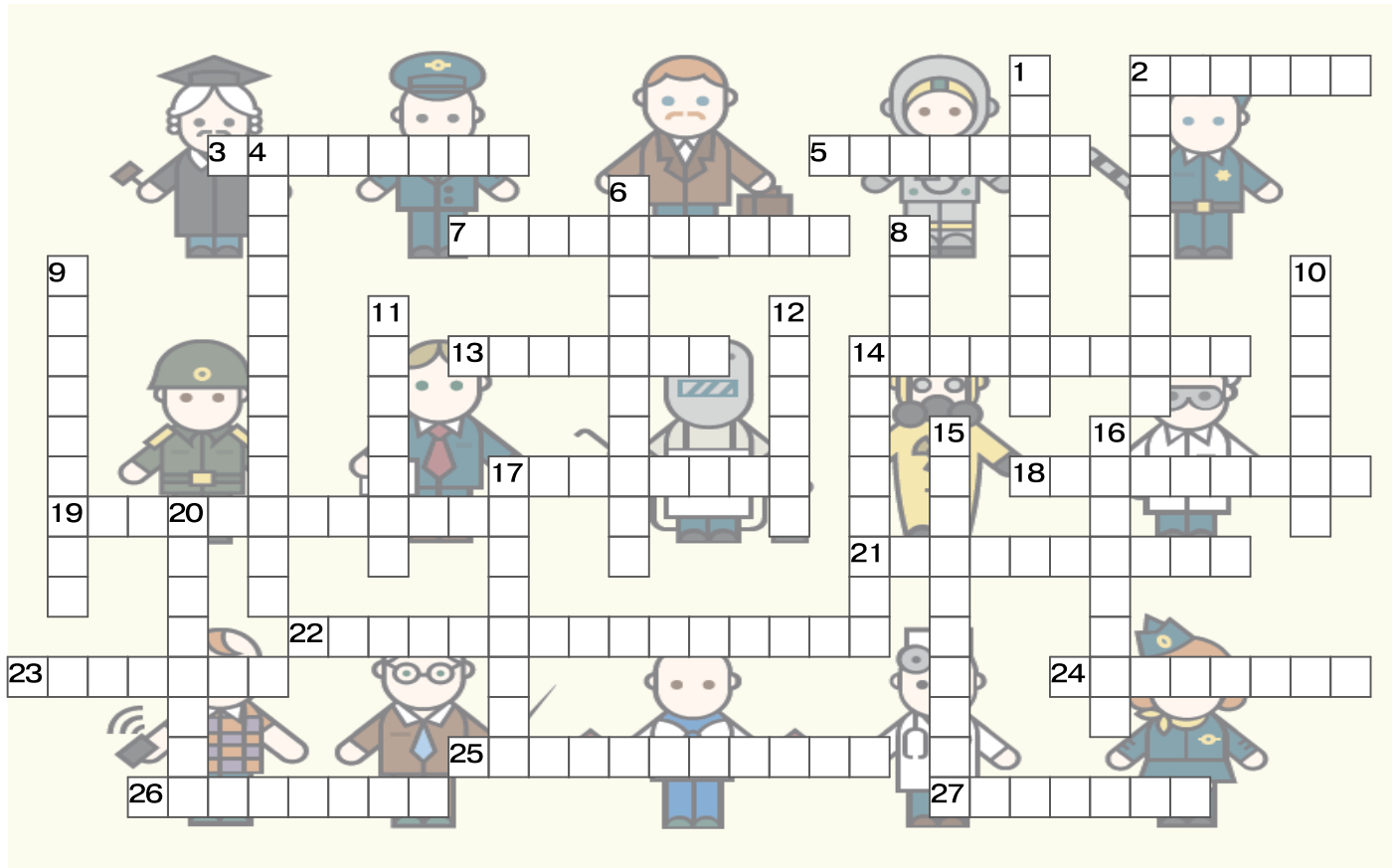
Trabajos

y

Profesiones



A. Using the Across and Down clues, write the corresponding Spanish term for each word in appropriate space on the grid below



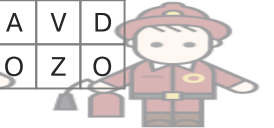
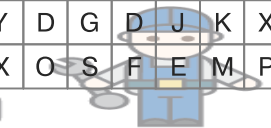
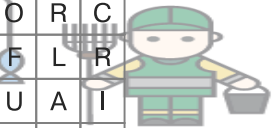
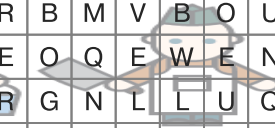
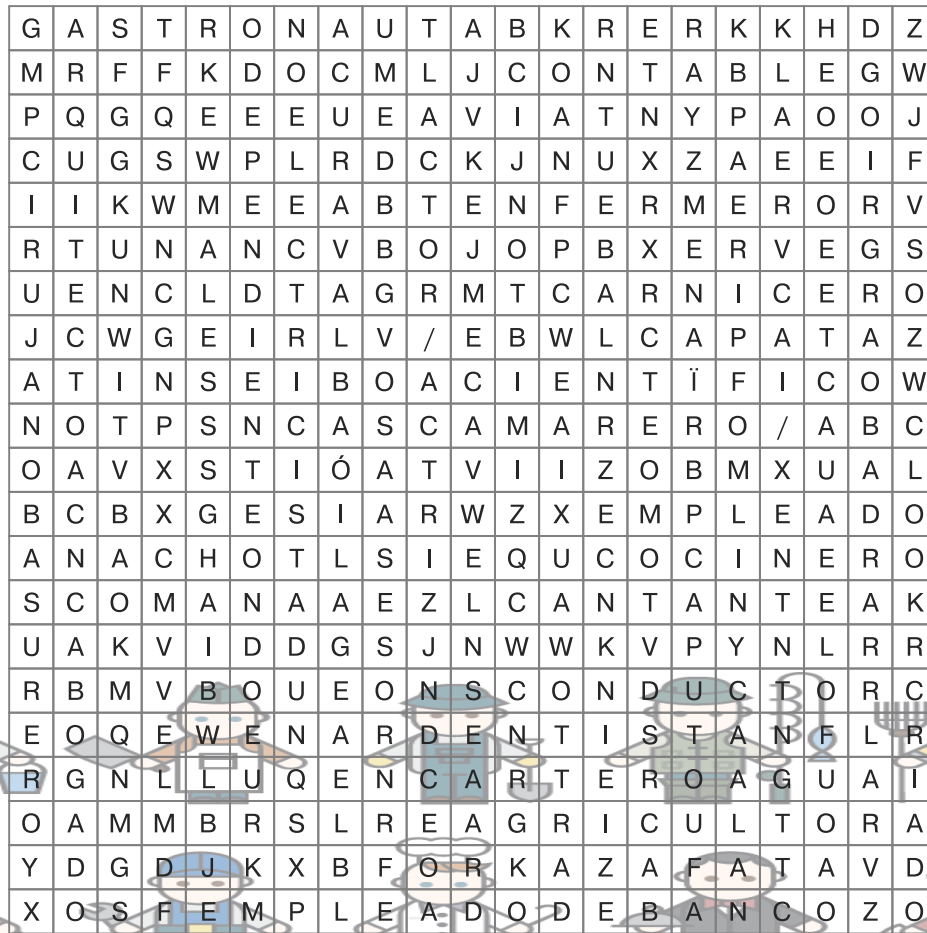
ACROSS

- 2. servant
- 3. dustman
- 5. fireman
- 7. architect
- 13. foreman
- 14. waiter/waitress
- 17. cook
- 18. lorry driver
- 19. electrician
- 21. farmer
- 22. bank clerk
- 23. air hostess
- 24. customs officer
- 25. shop assistant
- 26. dentist
- 27. lawyer

DOWN

- 1. butcher
- 2. driver
- 4. actor/actress
- 6. scientist
- 8. priest
- 9. nurse
- 10. postman
- 11. builder
- 12. consultant
- 14. surgeon
- 15. astronaut
- 16. employee
- 17. singer
- 20. accountant

B. Find the hidden words. The words have been placed horizontally, vertically, or diagonally. When you locate a word, draw a circle around it.



abogado

cantante

albañil

contable

cura

cirujano

basurero

empleado de banco

electricista

actor/actriz

dependiente

científico

cocinero

aduanero

enfermero

asesor

dentista

capataz

azafata

criado

bombero

cartero

arquitecto

astronauta

camarero/a

camionero

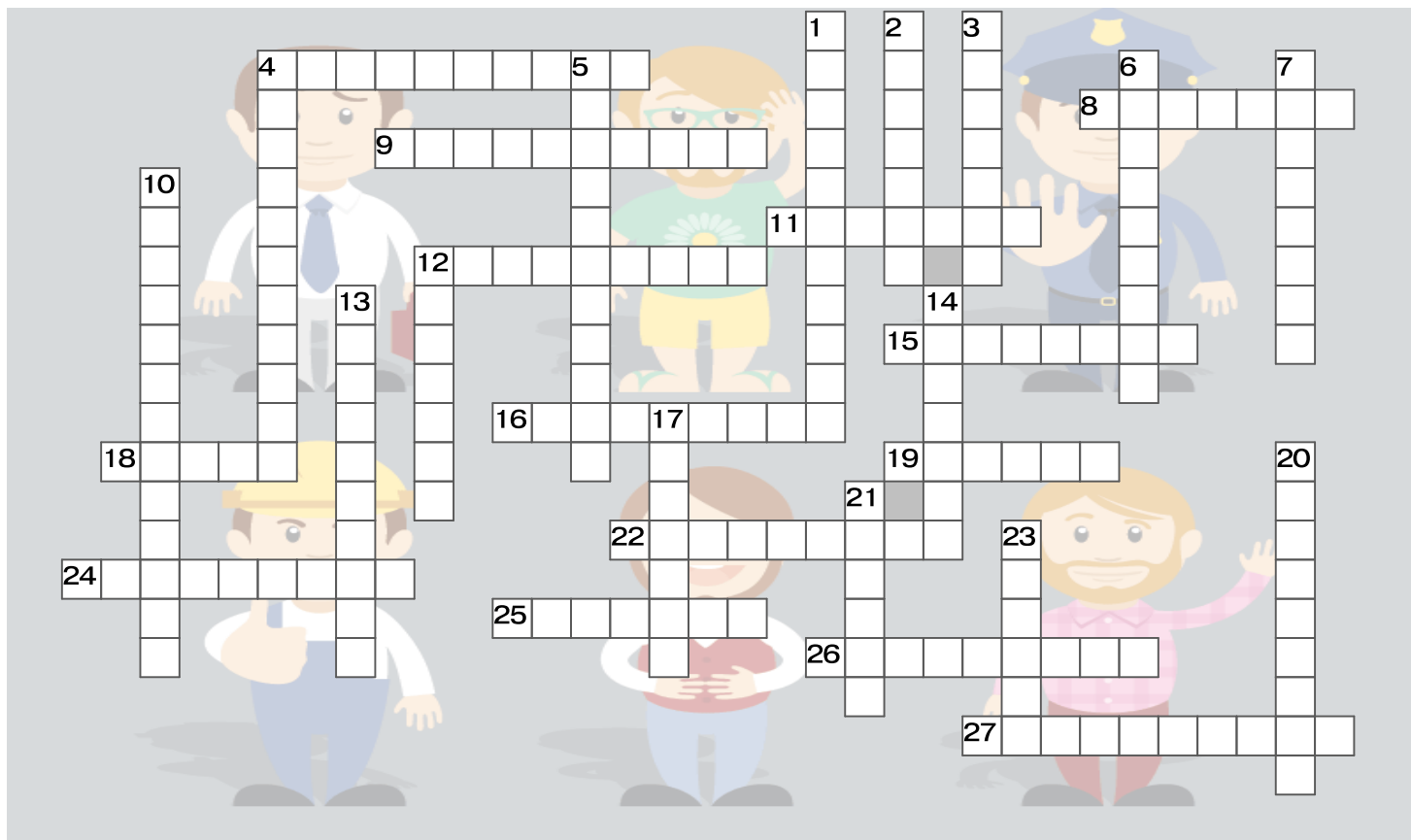
empleado

conductor

agricultor

carnicero

A. Using the Across and Down clues, write the corresponding Spanish term for each word in appropriate space on the grid below



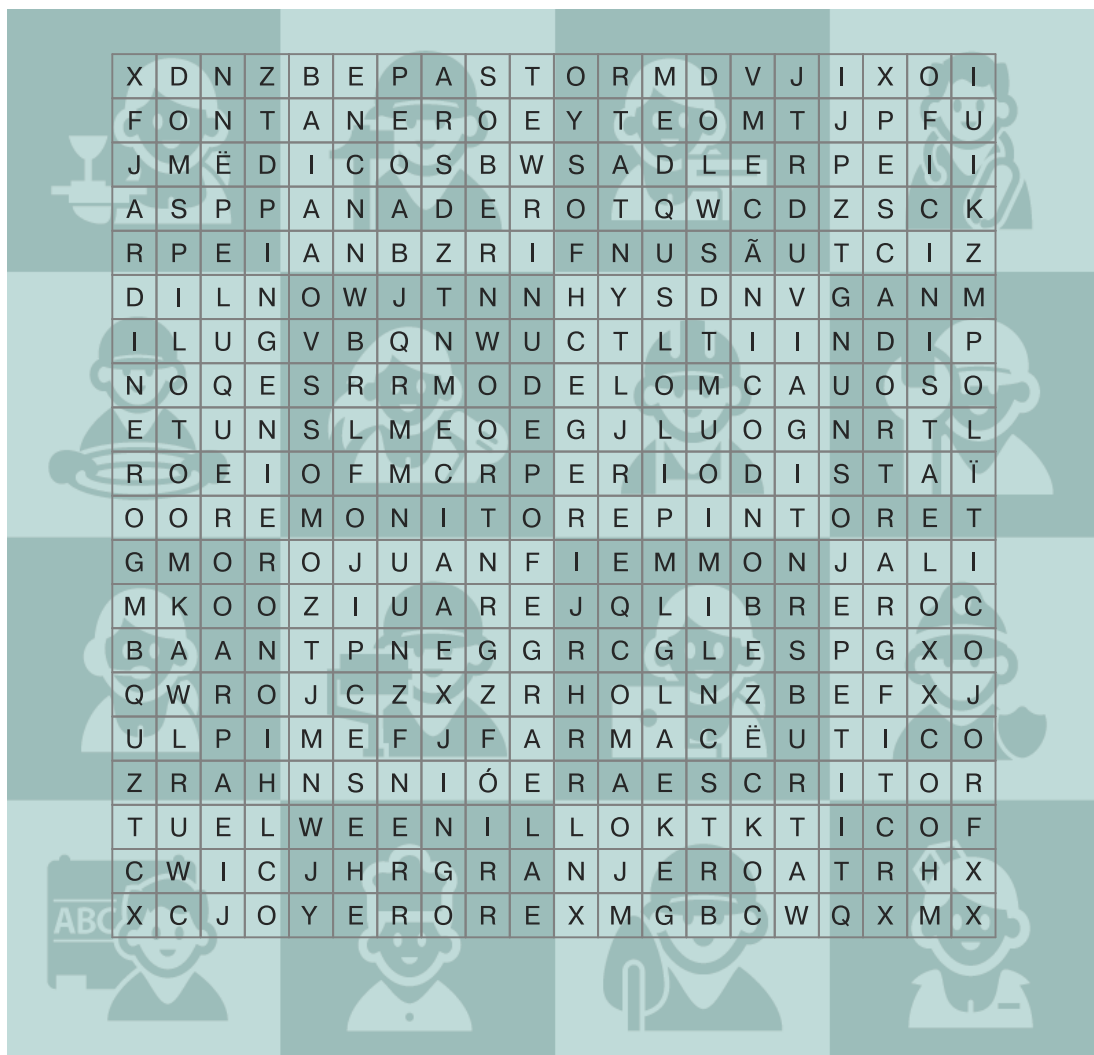
ACROSS

- 4. hairdresser
- 8. model
- 9. engineer
- 11. pilot
- 12. sailor
- 15. bookseller
- 16. farmer
- 18. judge
- 19. monk
- 22. fisherman
- 24. writer
- 25. shepherd
- 26. baker
- 27. gardener

DOWN

- 1. student
- 2. labourer
- 3. miner
- 4. journalist
- 5. office worker
- 6. politician
- 7. instructor
- 10. chemist
- 12. doctor
- 13. plumber
- 14. painter
- 17. jeweller
- 20. mechanic
- 21. nun
- 23. nanny

B. Find the hidden words. The words have been placed horizontally, vertically, or diagonally. When you locate a word, draw a circle around it.



fontanero

minero

escritor

mecánico

piloto

peluquero

monje

jardinero

monitor

juez

pintor

farmacéutico

granjero

modelo

oficinista

marinero

ingeniero

pescador

periodista

médico

estudiante

niñera

joyero

obrero

pastor

librero

político

panadero

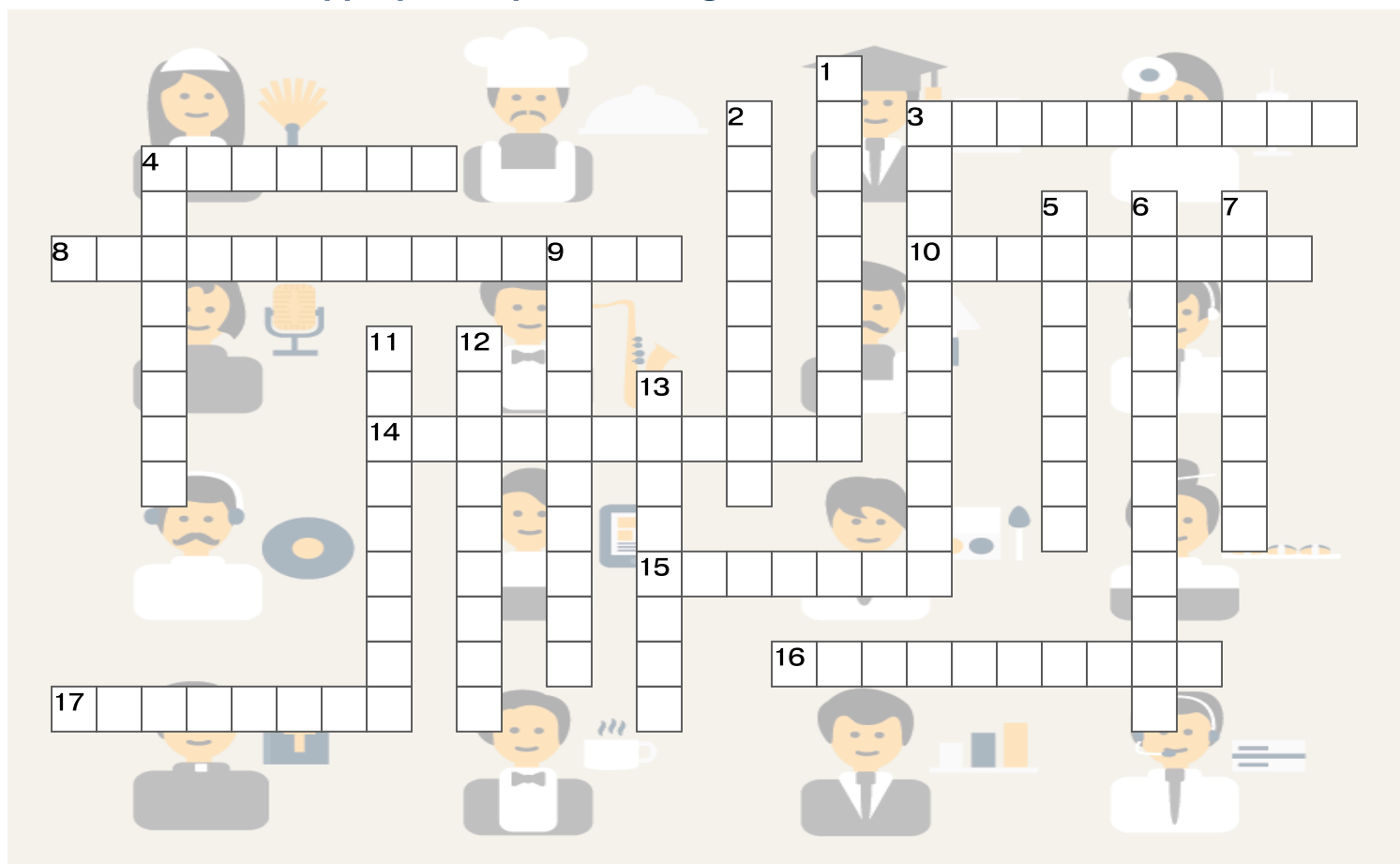
monja



Creative Learning Ltd.

"Nothing is more powerful than the union of passion
with a correct channeling of one's creativity"

A. Using the Across and Down clues, write the corresponding Spanish term for each word in appropriate space on the grid below



ACROSS

- 3. priest
- 4. bullfighter
- 8. receptionist
- 10. watchmaker
- 14. psychiatrist
- 15. tailor
- 16. reporter
- 17. policeman

DOWN

- 1. teacher
- 2. salesman
- 3. secretary
- 4. technician
- 5. soldier
- 6. vet
- 7. caretaker
- 9. translator
- 11. shoemaker
- 12. psychologist
- 13. taxi driver

B. Find the hidden words. The words have been placed horizontally, vertically, or diagonally. When you locate a word, draw a circle around it.



traductor

psicólogo

secretario

recepcionista

psiquiatra

profesor

reportero

sacerdote

portero

relojero

técnico

soldado

taxista

torero

sastre

vendedor

veterinario

zapatero

policía



Creative Learning Ltd.

*"Nothing is more powerful than the union of passion
with a correct channeling of one's creativity"*

1. Match the words with the clues provided. Once the match is made, the number of the correct clue is placed in the proper space of the square that is marked by the letter of the matching word. If the words and clues are matched correctly, the magic square columns, rows, and diagonals, will add up to the same number.



A=	B=	C=	D=
E=	F=	G=	H=
I=	J=	K=	L=
M=	N=	O=	P=



1. customs officer
2. fireman
3. architect
4. employee
5. astronaut
6. dentist
7. priest
8. scientist

9. accountant
10. bank clerk
11. surgeon
12. builder
13. lorry driver
14. consultant
15. nurse
16. foreman

- A. científico
D. bombero
G. albañil
J. astronauta
M. enfermero
P. contable

- B. cirujano
E. aduanero
H. cura
K. arquitecto
N. empleado

- C. camionero
F. asesor
I. empleado de banco
L. capataz
O. dentista

There are letters missing in each word below. Print the complete word on the blank line beside each word with missing letters.

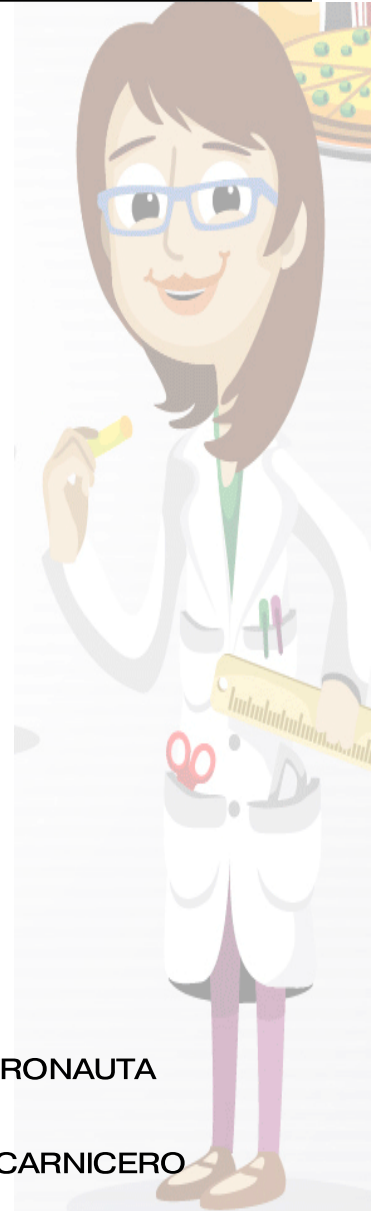
- | | |
|------------------------------|-------------------------------|
| 2. _ S _ S _ R _ | 17. C _ C _ N _ R _ |
| 3. C _ R N _ C _ R _ | 18. C _ N T _ B L _ |
| 4. _ S T R _ N _ _ T _ | 19. C _ _ N T Í F _ C _ |

- | | |
|-------------------------------|--------------------------------------|
| 5. C _ ND _ CT _ R _ | 20. _ LB _ Ñ _ L _ |
| 6. C _ R _ J _ N _ | 21. _ L _ CTR _ C _ ST _ |
| 7. C _ M _ _ N _ R _ | 22. C _ R _ |
| 8. C _ P _ T _ Z _ | 23. CR _ _ D _ |
| 9. D _ P _ ND _ _ NT _ | 24. C _ NT _ NT _ |
| 10. _ NF _ RM _ R _ | 25. B _ S _ R _ R _ |
| 11. _ RQ _ _ T _ CT _ | 26. C _ M _ R _ R _ / _ |
| 12. D _ NT _ ST _ | 27. _ MPL _ _ D _ |
| 13. _ GR _ C _ LT _ R _ | 28. _ CT _ R / _ CTR _ Z _ |
| 14. _ D _ _ N _ R _ | 29. B _ MB _ R _ |
| 15. C _ RT _ R _ | 30. _ Z _ F _ T _ |
| 16. _ B _ G _ D _ | 31. _ MPL _ _ D _ D _ B _ NC _ |



From the words provided for each clue, provide the letter of the word which best matches the clue.

32. ___ **singer**
A.CANTANTE B.ABOGADO C.EMPLEADO DE BANCO D.ADUANERO
33. ___ **butcher**
A.CANTANTE B.DENTISTA C.ADUANERO D.CARNICERO
34. ___ **driver**
A.CONTABLE B.CONDUCTOR C.AGRICULTOR D.BOMBERO
35. ___ **postman**
A.DENTISTA B.CARTERO C.ENFERMERO D.COCINERO
36. ___ **electrician**
A.ELECTRICISTA B.CRIADO C.ASTRONAUTA D.CONDUCTOR
37. ___ **scientist**
A.CIENTÍFICO B.CARTERO C.AZAFATA D.ASESOR
38. ___ **accountant**
A.ASESOR B.CONTABLE C.CURA D.EMPLEADO
39. ___ **nurse**
A.ENFERMERO B.ADUANERO C.ASTRONAUTA D.CONTABLE
40. ___ **cook**
A.EMPLEADO DE BANCO B.CAMARERO/A C.CARNICERO D.COCINERO



41. — **astronaut**
A.BASURERO B.CIENTÍFICO C.ENFERMERO D.ASTRONAUTA
42. — **shop assistant**
A.DEPENDIENTE B.ABOGADO C.CIRUJANO D.BASURERO
43. — **surgeon**
A.CIRUJANO B.ALBAÑIL C.AZAFATA D.CONTABLE
44. — **customs officer**
A.AZAFATA B.ASESOR C.ADUANERO D.CIRUJANO
45. — **dustman**
A.ELECTRICISTA B.DENTISTA C.BASURERO D.EMPLEADO
46. — **actor/actress**
A.ALBAÑIL B.ACTOR/ACTRIZ C.CAMIONERO D.BASURERO
47. — **consultant**
A.ASESOR B.CANTANTE C.CURA D.CIRUJANO
48. — **architect**
A.DENTISTA B.CONDUCTOR C.CAPATAZ D.ARQUITECTO
49. — **priest**
A.EMPLEADO B.CURA C.CARTERO D.BOMBERO
50. — **builder**
A.ALBAÑIL B.CIENTÍFICO C.CONTABLE D.DEPENDIENTE
51. — **bank clerk**
A.EMPLEADO DE BANCO B.CAPATAZ C.DEPENDIENTE D.ASTRONAUTA
52. — **lorry driver**
A.EMPLEADO DE BANCO B.DEPENDIENTE C.CAMIONERO D.CARNICERO
53. — **farmer**
A.AGRICULTOR B.COCINERO C.CIRUJANO D.CAMARERO/A
54. — **lawyer**
A.ASESOR B.EMPLEADO C.CIRUJANO D.ABOGADO
55. — **dentist**
A.ENFERMERO B.DENTISTA C.BASURERO D.ELECTRICISTA
56. — **waiter/waitress**
A.CIRUJANO B.AGRICULTOR C.ASTRONAUTA D.CAMARERO/A
57. — **air hostess**
A.CARTERO B.EMPLEADO DE BANCO C.DENTISTA D.AZAFATA
58. — **employee**
A.CONTABLE B.ACTOR/ACTRIZ C.EMPLEADO DE BANCO D.EMPLEADO

59. ___ **fireman**
A.ASESOR B.BOMBERO C.DEPENDIENTE D.CONTABLE
60. ___ **foreman**
A.DEPENDIENTE B.CAMARERO/A C.ADUANERO D.CAPATAZ
61. ___ **servant**
A.CONDUCTOR B.AZAFATA C.CRIADO D.CAMIONERO

The words on the list are split, with the first part of the word listed on the left-hand side of the worksheet and the second part listed somewhere on the right-hand side of the worksheet. Draw lines to connect the two parts of each word. Then write the complete word on the blank line.

62. abog ●
63. basu ●
64. enfe ●
65. cond ●
66. cri ●
67. dent ●
68. empleado ●
69. cu ●
70. cont ●
71. cant ●
72. carn ●
73. ase ●
74. cami ●
75. cart ●
76. bomb ●
77. actor/ ●
78. arqui ●
79. depend ●



- ante
- sor
- ero
- de banco
- actriz
- iente
- able
- ado
- onero
- ista
- ero
- icero
- mero
- ado
- tecto
- ra
- uctor
- rero

62. lawyer
63. dustman
64. nurse
65. driver
66. servant
67. dentist
68. bank clerk
69. priest
70. accountant
71. singer



- 72. butcher
- 73. consultant
- 74. lorry driver
- 75. postman

- 76. fireman
- 77. actor/actress
- 78. architect
- 79. shop assistant

For each word listed, write a short sentence in English describing a typical activity associated with the profession in question. You may use your text book to look up any unfamiliar word. (More advanced students can attempt writing the sentence in Spanish)

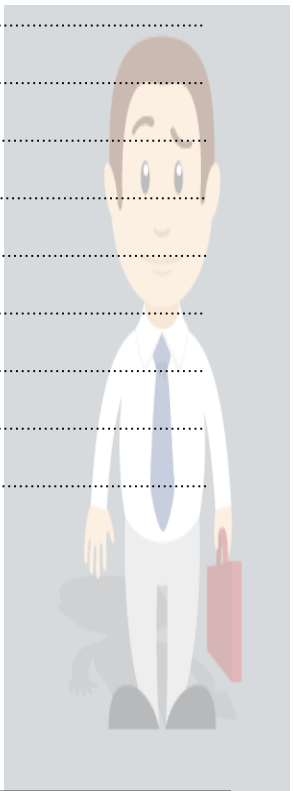
- 80. **CRIADO** _____
- 81. **CAMIONERO** _____
- 82. **EMPLEADO** _____
- 83. **CARTERO** _____
- 84. **BASURERO** _____
- 85. **AGRICULTOR** _____
- 86. **ALBAÑIL** _____
- 87. **BOMBERO** _____
- 88. **ARQUITECTO** _____
- 89. **ACTOR/ACTRIZ** _____
- 90. **ABOGADO** _____
- 91. **ASESOR** _____
- 92. **EMPLEADO DE BANCO** _____
- 93. **CARNICERO** _____
- 94. **DEPENDIENTE** _____
- 95. **CANTANTE** _____
- 96. **CONTABLE** _____
- 97. **DENTISTA** _____
- 98. **CAPATAZ** _____
- 99. **ENFERMERO** _____
- 100. **ASTRONAUTA** _____
- 101. **CONDUCTOR** _____



102. **CAMARERO/A** _____
103. **CIENTÍFICO** _____
104. **CURA** _____
105. **CIRUJANO** _____
106. **COCINERO** _____
107. **AZAFATA** _____
108. **ADUANERO** _____
109. **ELECTRICISTA** _____

The letters of the words below are jumbled. Figure out what the Spanish word is using the English clues and write it on the blank line provided.

- | | |
|-------------------------|----------------------------|
| 110. OREMREFNE | 125. ORENOIMAC |
| 111. ORETRAC | 126. ORENAUDA |
| 112. ONAJURIC | 127. ORENICOC |
| 113. ODAGOBA | 128. ATAFAZA |
| 114. ORERUSAB | 129. ARUC |
| 115. ZIRTCA/ROTCA | 130. ZATAPAC |
| 116. ATUANORTSA | 131. ROTLUCIRGA |
| 117. ODAELPME | 132. OTCETIUQRA |
| 118. ELBATNOC | 133. A/ORERAMAC |
| 119. ATSITNED | 134. ROSESA |
| 120. ORECINRAC | 135. OREBMOB |
| 121. ROTCUDNOC | 136. OCNABEDODAELPME |
| 122. ETNEIDNEPED | 137. ODAIRC |
| 123. OCIFÍTNEIC | 138. LIÑABLA |
| 124. ETNATNAC | 139. ATSICIRTCELE |
-
- | | |
|--------------------|-----------------|
| 110. nurse | 116. astronaut |
| 111. postman | 117. employee |
| 112. surgeon | 118. accountant |
| 113. lawyer | 119. dentist |
| 114. dustman | 120. butcher |
| 115. actor/actress | 121. driver |





- 122. shop assistant
- 123. scientist
- 124. singer
- 125. lorry driver
- 126. customs officer
- 127. cook
- 128. air hostess
- 129. priest
- 130. foreman

- 131. farmer
- 132. architect
- 133. waiter/waitress
- 134. consultant
- 135. fireman
- 136. bank clerk
- 137. servant
- 138. builder
- 139. electrician



- A. Match the words with the clues provided. Once the match is made, the number of the correct clue is placed in the proper space of the square that is marked by the letter of the matching word. If the words and clues are matched correctly, the magic square columns, rows, and diagonals, will add up to the same number.



A=	B=	C=	D=
E=	F=	G=	H=
I=	J=	K=	L=
M=	N=	O=	P=



- | | |
|----------------------|------------------------|
| 1. <i>nun</i> | 9. <i>bookseller</i> |
| 2. <i>journalist</i> | 10. <i>student</i> |
| 3. <i>mechanic</i> | 11. <i>painter</i> |
| 4. <i>shepherd</i> | 12. <i>politician</i> |
| 5. <i>writer</i> | 13. <i>hairstylist</i> |
| 6. <i>judge</i> | 14. <i>doctor</i> |
| 7. <i>pilot</i> | 15. <i>monk</i> |
| 8. <i>baker</i> | 16. <i>gardener</i> |

- | | | | | |
|-------------|---------------|--------------|--------------|-------------|
| A. librero | B. periodista | C. jardinero | D. piloto | E. monje |
| F. panadero | G. estudiante | H. monja | I. pastor | J. pintor |
| K. escritor | L. médico | M. juez | N. peluquero | O. mecánico |
| P. político | | | | |

- B. There are letters missing in each word below. Print the complete word on the blank line beside each word with missing letters.

- | | |
|-----------------------------|-----------------------------|
| 1. _ BR _ R _ | 16. GR _ NJ _ R _ |
| 2. _ NG _ N _ _ R _ | 17. M _ N _ T _ R _ |
| 3. J _ RD _ N _ R _ | 18. P _ L _ Q _ _ R _ |
| 4. _ F _ C _ N _ ST _ | 19. _ ST _ D _ _ NT _ |

"Nothing is more powerful than a person's passion with a correct channeling of his creativity"

- | | |
|----------------------------|---------------------------------|
| 5. P _ NT _ R _ | 20. P _ R _ _ D _ ST _ |
| 6. L _ BR _ R _ | 21. M _ NJ _ |
| 7. N _ Ñ _ R _ | 22. P _ ST _ R _ |
| 8. M _ N _ R _ | 23. _ SCR _ T _ R _ |
| 9. P _ N _ D _ R _ | 24. F _ RM _ CÉ _ T _ C _ |
| 10. M _ D _ L _ | 25. M _ NJ _ |
| 11. M _ CÁN _ C _ | 26. J _ _ Z _ |
| 12. P _ LÍT _ C _ | 27. P _ SC _ D _ R _ |
| 13. J _ Y _ R _ | 28. P _ L _ T _ |
| 14. F _ NT _ N _ R _ | 29. M _ R _ N _ R _ |
| 15. MÉD _ C _ | |

C. From the words provided for each clue, provide the letter of the word which best matches the clue.

1. ___ **chemist**
A.MÉDICO B.FARMACÉUTICO C.MONJE D.MINERO
2. ___ **miner**
A.PILOTO B.JOYERO C.MODELO D.MINERO
3. ___ **model**
A.INGENIERO B.MÉDICO C.MODELO D.POLÍTICO
4. ___ **instructor**
A.JOYERO B.MARINERO C.MONITOR D.MONJE
5. ___ **farmer**
A.INGENIERO B.MONITOR C.GRANJERO D.PERIODISTA
6. ___ **plumber**
A.ESTUDIANTE B.MONITOR C.FONTANERO D.OBRERO
7. ___ **journalist**
A.PERIODISTA B.ESTUDIANTE C.PASTOR D.OBRERO
8. ___ **shepherd**
A.PANADERO B.PASTOR C.ESCRITOR D.JUEZ
9. ___ **student**
A.ESTUDIANTE B.MONITOR C.PELUQUERO D.MECÁNICO
10. ___ **nanny**
A.NIÑERA B.PELUQUERO C.MONITOR D.PINTOR



11. — **monk**
A.JUEZ B.MONITOR C.ESTUDIANTE D.MONJE
12. — **engineer**
A.PILOTO B.LIBRERO C.OBRERO D.INGENIERO
13. — **sailor**
A.MONJA B.MECÁNICO C.MARINERO D.INGENIERO
14. — **fisherman**
A.FONTANERO B.PESCADOR C.OBRERO D.ESTUDIANTE
15. — **judge**
A.JOYERO B.JUEZ C.ESCRITOR D.INGENIERO
16. — **gardener**
A.JARDINERO B.POLÍTICO C.PILOTO D.PINTOR
17. — **labourer**
A.OBRERO B.NIÑERA C.MARINERO D.MÉDICO
18. — **hairdresser**
A.NIÑERA B.MODELO C.GRANJERO D.PELUQUERO
19. — **doctor**
A.MÉDICO B.MONJE C.PERIODISTA D.OBRERO
20. — **pilot**
A.JUEZ B.LIBRERO C.PILOTO D.POLÍTICO
21. — **baker**
A.OFICINISTA B.NIÑERA C.PANADERO D.OBRERO
22. — **office worker**
A.INGENIERO B.ESTUDIANTE C.PINTOR D.OFICINISTA
23. — **bookseller**
A.JARDINERO B.PELUQUERO C.MONJE D.LIBRERO
24. — **painter**
A.GRANJERO B.PINTOR C.PELUQUERO D.MECÁNICO
25. — **politician**
A.PELUQUERO B.PILOTO C.PANADERO D.POLÍTICO
26. — **writer**
A.JOYERO B.ESCRITOR C.ESTUDIANTE D.LIBRERO
27. — **jeweller**
A.MECÁNICO B.JOYERO C.GRANJERO D.LIBRERO
28. — **nun**
A.MINERO B.MONJA C.MECÁNICO D.FARMACÉUTICO



29. — **mechanic**
A.MODELO B.PELUQUERO C.MECÁNICO D.MONJE

D. The words on the list are split, with the first part of the word listed on the left-hand side of the worksheet and the second part listed somewhere on the right-hand side of the worksheet. Draw lines to connect the two parts of each word. Then write the complete word on the blank line.

1. ofici
2. pil
3. mo
4. moni
5. polí
6. niñ
7. estud
8. mecá
9. pin
10. ju
11. font
12. farmac
13. libr
14. pana
15. pelu
16. inge
17. méd
18. pesc
19. mo
20. pas
21. perio
22. min



- anero
- tico
- ero
- ero
- nico
- nista
- ez
- dista
- oto
- ico
- éutico
- tor
- era
- tor
- niero
- dero
- quero
- iante
- ador
- nja
- nje
- tor

1. office worker
2. pilot
3. monk
4. instructor

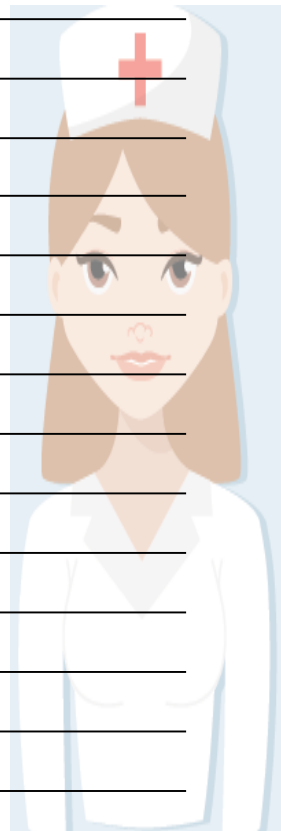
5. politician
6. nanny
7. student
8. mechanic

*"Nothing is more powerful than the union of passion
with a correct channelling of one's creativity"*

- | | |
|-----------------|----------------|
| 9. painter | 16. engineer |
| 10. judge | 17. doctor |
| 11. plumber | 18. fisherman |
| 12. chemist | 19. nun |
| 13. bookseller | 20. shepherd |
| 14. baker | 21. journalist |
| 15. hairdresser | 22. miner |

E. For each word listed, write a short sentence in English describing a typical activity associated with the profession in question. You may use your text book to look up any unfamiliar word. (More advanced students can attempt writing the sentence in Spanish)

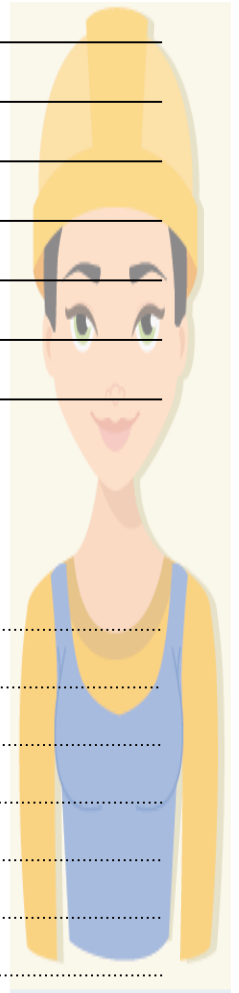
1. **PELUQUERO** _____
2. **POLÍTICO** _____
3. **MODELO** _____
4. **JUEZ** _____
5. **OBRERO** _____
6. **OFICINISTA** _____
7. **MINERO** _____
8. **MONITOR** _____
9. **PERIODISTA** _____
10. **ESCRITOR** _____
11. **NIÑERA** _____
12. **FONTANERO** _____
13. **MÉDICO** _____
14. **MECÁNICO** _____
15. **JARDINERO** _____
16. **MONJA** _____
17. **FARMACÉUTICO** _____
18. **INGENIERO** _____
19. **PINTOR** _____
20. **PANADERO** _____
21. **PESCADOR** _____



22. **PILOTO** _____
23. **MONJE** _____
24. **ESTUDIANTE** _____
25. **MARINERO** _____
26. **JOYERO** _____
27. **LIBRERO** _____
28. **GRANJERO** _____
29. **PASTOR** _____

F. The letters of the words below are jumbled. Figure out what the Spanish word is using the English clues and write it on the blank line provided.

- | | |
|---------------------|------------------------|
| 1. ORPNIT | 16. PTRSOA |
| 2. NJOEM | 17. IOOÍCTL |
| 3. IOMOTRN | 18. TEASUIDNTE |
| 4. NIMAERRO | 19. MNIROE |
| 5. JNMAO | 20. JRRODANEI |
| 6. IIFICSNATO | 21. GOJAERNR |
| 7. OLOEDM | 22. PTILOO |
| 8. PRANAEDO | 23. UEZJ |
| 9. MIDOÉC | 24. IDPTOAIRES |
| 10. SACRPOED | 25. EBORRO |
| 11. RQPUOEULE | 26. NIMÁECCO |
| 12. EBOIRRL | 27. ESCITROR |
| 13. NAFOONERT | 28. RAOAFÉCMUCIT |
| 14. JOOEYR | 29. RNIAÑE |
| 15. NNIEGREIO | |

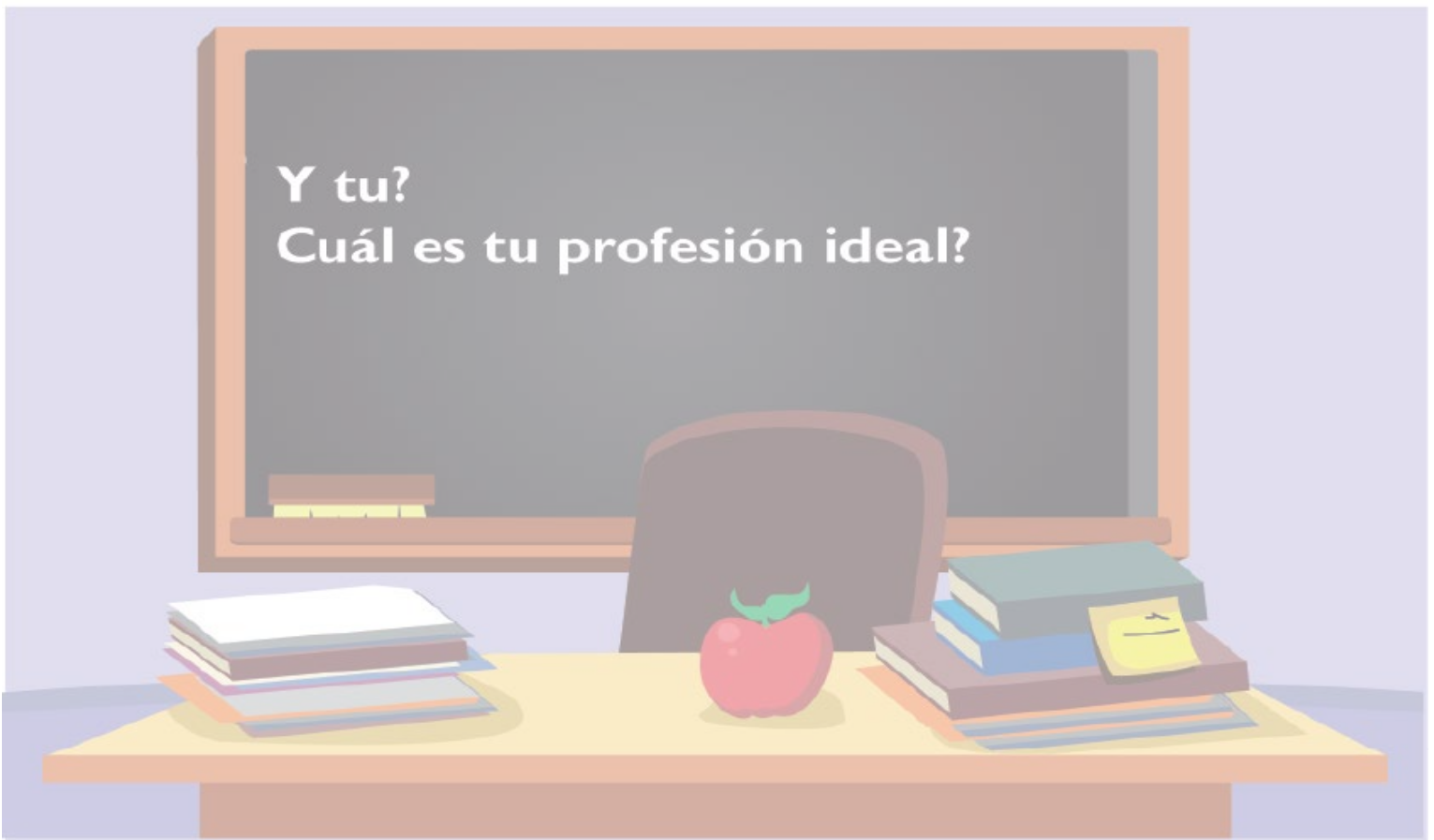


- | | |
|---------------|----------------|
| 1. painter | 6. hairdresser |
| 2. instructor | 7. plumber |
| 3. nun | 8. engineer |
| 4. model | 9. politician |
| 5. doctor | 10. miner |



*"Nothing is more powerful than the union of passion
with a correct channelling of one's creativity"*

- | | |
|-------------------|----------------|
| 11. farmer | 21. bookseller |
| 12. judge | 22. jeweller |
| 13. labourer | 23. shepherd |
| 14. writer | 24. student |
| 15. nanny | 25. gardener |
| 16. monk | 26. pilot |
| 17. sailor | 27. journalist |
| 18. office worker | 28. mechanic |
| 19. baker | 29. chemist |
| 20. fisherman | |



- A. Match the words with the clues provided. Once the match is made, the number of the correct clue is placed in the proper space of the square that is marked by the letter of the matching word. If the words and clues are matched correctly, the magic square columns, rows, and diagonals, will add up to the same number.



A=	B=	C=	D=
E=	F=	G=	H=
I=	J=	K=	L=
M=	N=	O=	P=



1. taxi driver
2. priest
3. caretaker
4. receptionist
5. teacher
6. vet
7. secretary
8. tailor

9. psychiatrist
10. technician
11. reporter
12. soldier
13. salesman
14. watchmaker
15. shoemaker
16. psychologist

- | | | | |
|----------------|-------------|--------------|------------------|
| A. veterinario | B. portero | C. psicólogo | D. psiquiatra |
| E. zapatero | F. técnico | G. profesor | H. recepcionista |
| I. taxista | J. sastre | K. reportero | L. relojero |
| M. soldado | N. vendedor | O. sacerdote | P. secretario |

- B. There are letters missing in each word below. Print the complete word on the blank line beside each word with missing letters.

- | | |
|----------------------------------|-----------------------------|
| 1. T _ R _ R _ | 11. V _ ND _ D _ R _ |
| 2. V _ T _ R _ N _ R _ _ | 12. PS _ Q _ _ _ TR _ |
| 3. P _ L _ CÍ _ | 13. R _ L _ J _ R _ |
| 4. R _ C _ PC _ _ N _ ST _ | 14. R _ P _ RT _ R _ |

Nothing is more powerful than a person's imagination
with a correct channeling of its creative energy.

- | | |
|---------------------------|--------------------------|
| 5. Z _ P _ T _ R _ | 15. PR _ F _ S _ R |
| 6. TÉCN _ C _ | 16. PS _ CÓL _ G _ |
| 7. S _ C _ RD _ T _ | 17. P _ RT _ R _ |
| 8. S _ CR _ T _ R _ | 18. T _ X _ ST _ |
| 9. TR _ D _ CT _ R | 19. S _ STR _ |
| 10. S _ LD _ D _ | |

C. From the words provided for each clue, provide the letter of the word which best matches the clue.

1. ___ **policeman**
A.PROFESOR B.SACERDOTE C.TORERO D.POLICÍA
2. ___ **bullfighter**
A.TRADUCTOR B.POLICÍA C.TORERO D.RELOJERO
3. ___ **taxi driver**
A.ZAPATERO B.SASTRE C.SACERDOTE D.TAXISTA
4. ___ **priest**
A.SACERDOTE B.PSIQUIATRA C.RECEPCIONISTA D.POLICÍA
5. ___ **watchmaker**
A.TRADUCTOR B.SACERDOTE C.PSICÓLOGO D.RELOJERO
6. ___ **receptionist**
A.PROFESOR B.TRADUCTOR C.ZAPATERO D.RECEPCIONISTA
7. ___ **psychiatrist**
A.PSIQUIATRA B.SASTRE C.TAXISTA D.VETERINARIO
8. ___ **technician**
A.TÉCNICO B.SACERDOTE C.RELOJERO D.PORTERO
9. ___ **vet**
A.VENDEDOR B.VETERINARIO C.RECEPCIONISTA D.SECRETARIO
10. ___ **psychologist**
A.SACERDOTE B.REPORTERO C.PSICÓLOGO D.PORTERO
11. ___ **salesman**
A.RELOJERO B.VENDEDOR C.RECEPCIONISTA D.REPORTERO
12. ___ **tailor**
A.SASTRE B.VENDEDOR C.RELOJERO D.SECRETARIO

13. ___ **shoemaker**
A.SECRETARIO B.ZAPATERO C.PROFESOR D.TRADUCTOR
14. ___ **soldier**
A.TRADUCTOR B.ZAPATERO C.PSIQUIATRA D.SOLDADO
15. ___ **secretary**
A.RECEPCIONISTA B.SECRETARIO C.TAXISTA D.SACERDOTE
16. ___ **teacher**
A.PROFESOR B.TAXISTA C.SOLDADO D.PORTERO
17. ___ **caretaker**
A.PORTERO B.TRADUCTOR C.TAXISTA D.RELOJERO
18. ___ **reporter**
A.PSICÓLOGO B.REPORTERO C.TORERO D.POLICÍA
19. ___ **translator**
A.TRADUCTOR B.VENDEDOR C.PORTERO D.TÉCNICO



D. The words on the list are split, with the first part of the word listed on the left-hand side of the worksheet and the second part listed somewhere on the right-hand side of the worksheet. Draw lines to connect the two parts of each word. Then write the complete word on the blank line.

1. secre					• ado
2. sas					• jero
3. psic					• ólogo
4. relo					• ico
5. repo					• tre
6. poli					• ero
7. sold					• esor
8. prof					• rdote
9. tor					• ionista
10. sace					• tario
11. port					• rtero
12. psiqu					• uctor
13. taxi					• cía
14. veteri					• sta
15. zapa					• ero
16. técn					• nario
17. trad					• edor
18. recepc					• iatra
19. vend					• tero

- | | |
|-----------------|------------------|
| 1. secretary | 11. caretaker |
| 2. tailor | 12. psychiatrist |
| 3. psychologist | 13. taxi driver |
| 4. watchmaker | 14. vet |
| 5. reporter | 15. shoemaker |
| 6. policeman | 16. technician |
| 7. soldier | 17. translator |
| 8. teacher | 18. receptionist |
| 9. bullfighter | 19. salesman |
| 10. priest | |

"Nothing is more powerful than the union of passion
with a correct channelling of one's creativity"

E. For each word listed, write a short sentence in English describing a typical activity associated with the profession in question. You may use your text book to look up any unfamiliar word. (More advanced students can attempt writing the sentence in Spanish)

1. **POLICÍA** _____
2. **PORTERO** _____
3. **PROFESOR** _____
4. **PSICÓLOGO** _____
5. **PSIQUIATRA** _____
6. **RECEPCIONISTA** _____
7. **RELOJERO** _____
8. **REPORTERO** _____
9. **SACERDOTE** _____
10. **SASTRE** _____
11. **SECRETARIO** _____
12. **SOLDADO** _____
13. **TAXISTA** _____
14. **TÉCNICO** _____
15. **TORERO** _____
16. **TRADUCTOR** _____
17. **VENDEDOR** _____
18. **VETERINARIO** _____
19. **ZAPATERO** _____



F. The letters of the words below are jumbled. Figure out what the Spanish word is using the English clues and write it on the blank line provided.

- | | |
|--------------------|-----------------------|
| 1. DCUTOARRT | 11. IOCPLAÍ |
| 2. TCNÉICO | 12. EONITRAIEVR |
| 3. FSROPEOR | 13. OJRERELO |
| 4. SOGILPÓCO | 14. APEZAORT |



*"Nothing is more powerful than the union of passion
with a correct channeling of one's creativity"*

- | | |
|---------------------|-------------------------|
| 5. SDEROEATC | 15. RAEOISCRET |
| 6. ETRORO | 16. RESTAS |
| 7. SXTIATA | 17. CEIPNOSRTCEIA |
| 8. IAPIAURQST | 18. OSDDLOA |
| 9. EPRROROET | 19. ETPORRO |
| 10. EODNDVER | |

- | | |
|-----------------|------------------|
| 1. translator | 11. policeman |
| 2. technician | 12. vet |
| 3. teacher | 13. watchmaker |
| 4. psychologist | 14. shoemaker |
| 5. priest | 15. secretary |
| 6. bullfighter | 16. tailor |
| 7. taxi driver | 17. receptionist |
| 8. psychiatrist | 18. soldier |
| 9. reporter | 19. caretaker |
| 10. salesman | |





Write the correct vocabulary term under each drawing, be careful! Not all words have a corresponding drawing



















Doctor

Piloto

Policia

Bailarina

Mesera

Artista

Escritor

Actor

Musico

Panadero

Carnicero

Atleta

A number of words have been removed from each sentence and listed below the sentence. Use the listed words to fill the blanks in the sentence.

1. A que te _____?
2. Cual es _____ profesión ideal?
3. Que quieres _____ de grande?
4. El doctor cura _____ enfermedades
5. El plomero arregla _____ tubería
6. El músico sabe tocar _____ los menos un instrumento
7. El _____ practica deporte
8. El artista _____ y pinta
9. El comediante nos hace _____ í _____ contando chistes

10. El _____ prepara la comida

11. El panadero se levanta muy _____ o

12. El maestro enseña _____ sus alumnos

13. El _____ toma las decisiones importantes en el equipo

14. El periodista nos mantiene actualizados sobre lo que pasa en el _____ o

15. El _____ maneja aviones

16. El _____ sirve la comida

Translate the following sentences into English

17. El piloto maneja aviones

18. El jefe toma las decisiones importantes en el equipo

19. El mesero sirve la comida

20. Que es lo que te puede ayudar arreglar el plomero?

21. El maestro enseña a sus alumnos

22. Otra palabra para decir atleta?

23. Si el músico no canta que es lo que tiene que saber hacer por los menos?

24. El periodista nos mantiene actualizados sobre lo que pasa en el mundo

25. El cocinero prepara la comida

26. A que te dedicas?

27. Que hace el doctor?

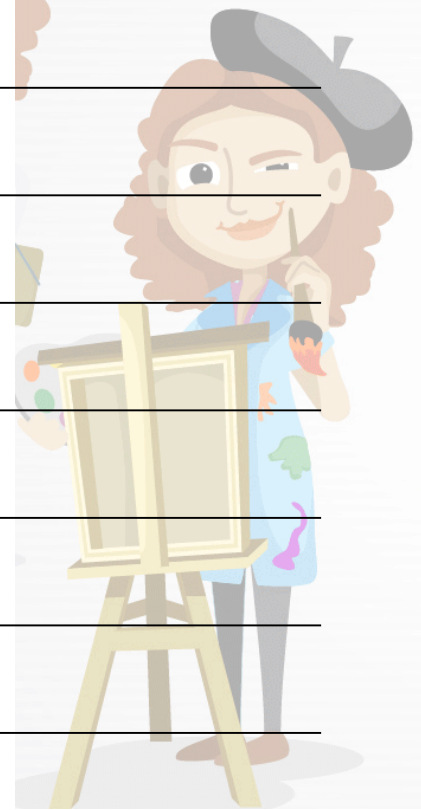
28. En que consiste el trabajo del escritor?

29. Que quieres ser de grande?

30. Cual es tu profesión ideal?

31. Un verbo que describe el trabajo de un artista?

32. El panadero se levanta muy temprano



Use the lines below each question to write a short answer.

33. Otra palabra para decir atleta?

34. Que es lo que te puede ayudar arreglar el plomero?

35. Que quieres ser de grande?

36. Cual es tu profesión ideal?

37. A que te dedicas?

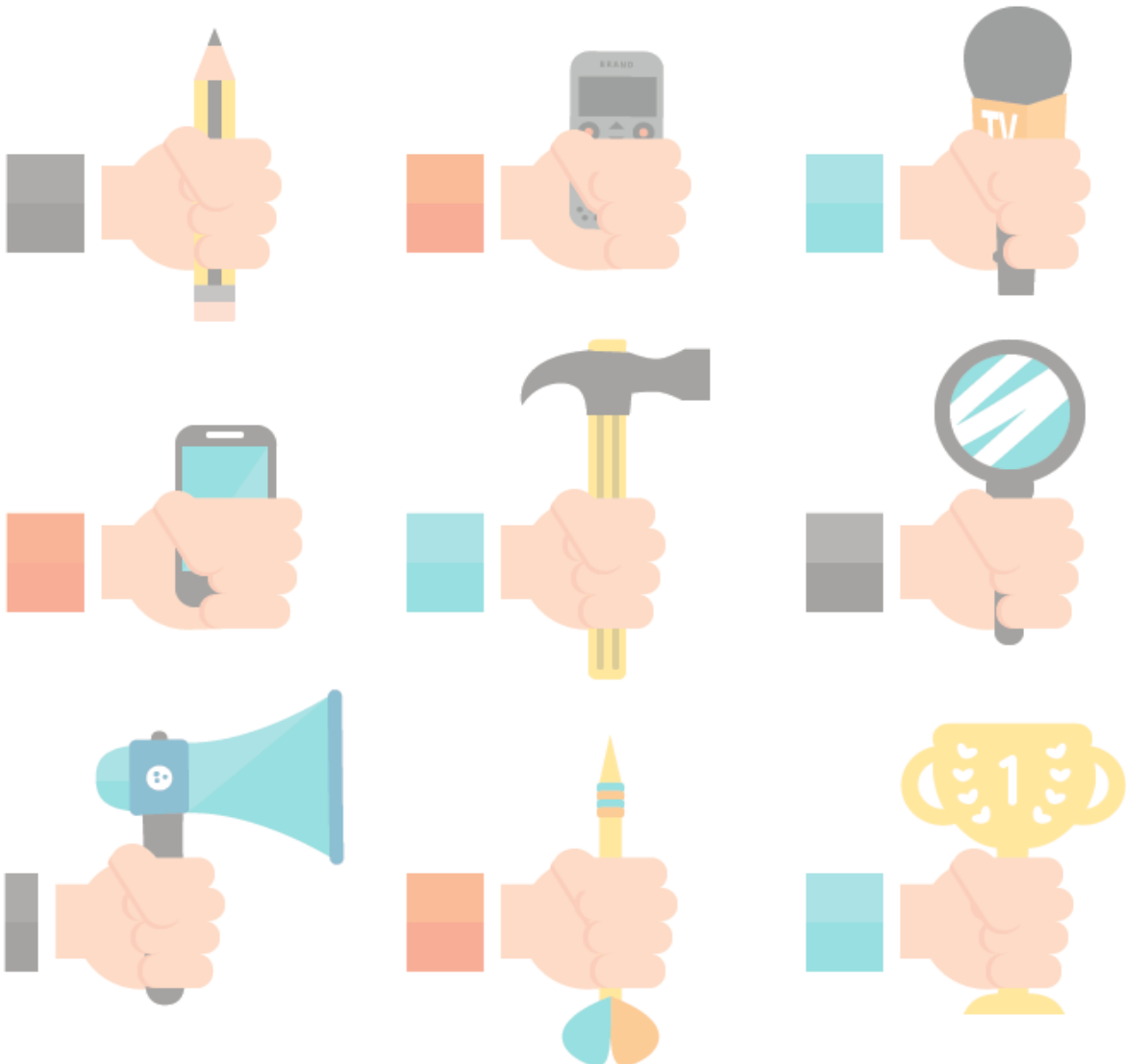
38. Que hace el doctor?

39. Un verbo que describe el trabajo de un artista?

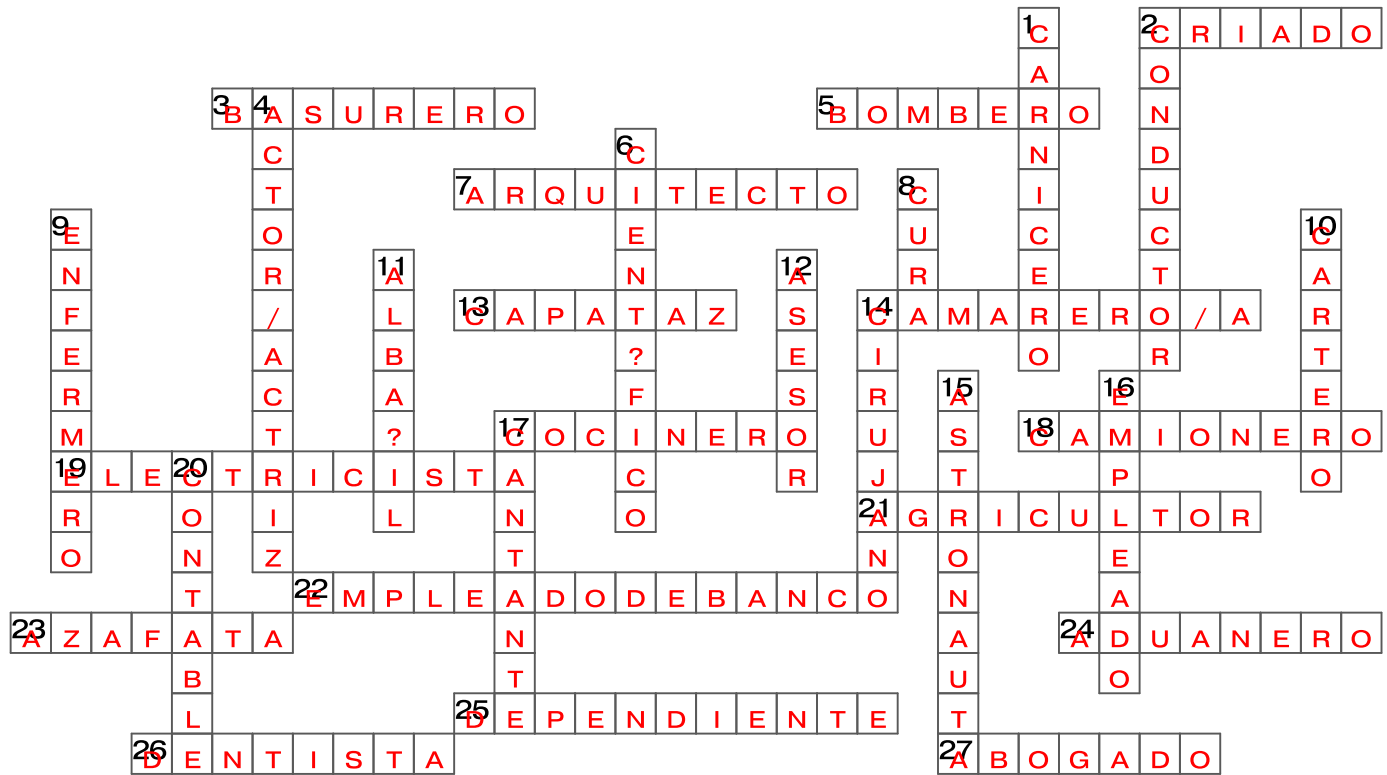
40. En que consiste el trabajo del escritor?

41. Si el músico no canta que es lo que tiene que saber hacer por los menos?

42. Que nos provoca un buen comediante?



A. Using the Across and Down clues, write the corresponding Spanish term for each word in appropriate space on the grid below



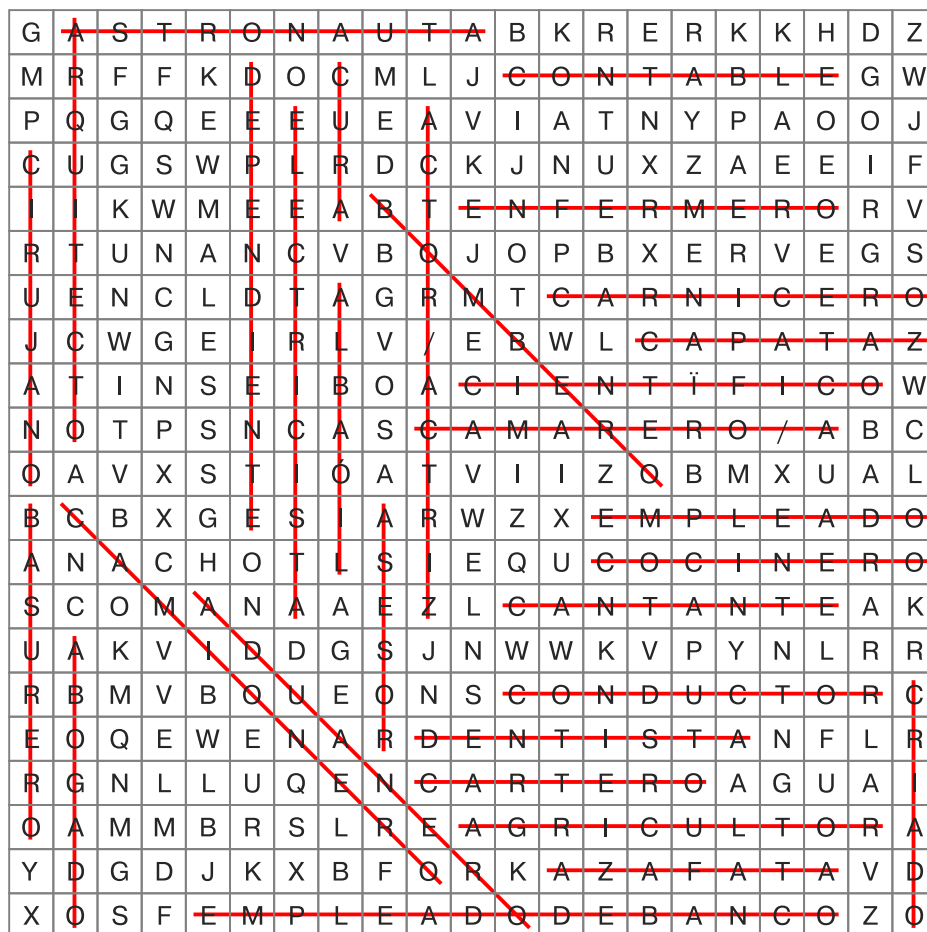
ACROSS

2. servant
3. dustman
5. fireman
7. architect
13. foreman
14. waiter/waitress
17. cook
18. lorry driver
19. electrician
21. farmer
22. bank clerk
23. air hostess
24. customs officer
25. shop assistant
26. dentist
27. lawyer

DOWN

1. butcher
2. driver
4. actor/actress
6. scientist
8. priest
9. nurse
10. postman
11. builder
12. consultant
14. surgeon
15. astronaut
16. employee
17. singer
20. accountant

B. Find the hidden words. The words have been placed horizontally, vertically, or diagonally. When you locate a word, draw a circle around it.



abogado

cantante

albañil

contable

cura

cirujano

basurero

empleado de banco

electricista

actor/actriz

dependiente

científico

cocinero

aduanero

enfermero

asesor

dentista

capataz

azafata

criado

bombero

cartero

arquitecto

astronauta

camarero/a

camionero

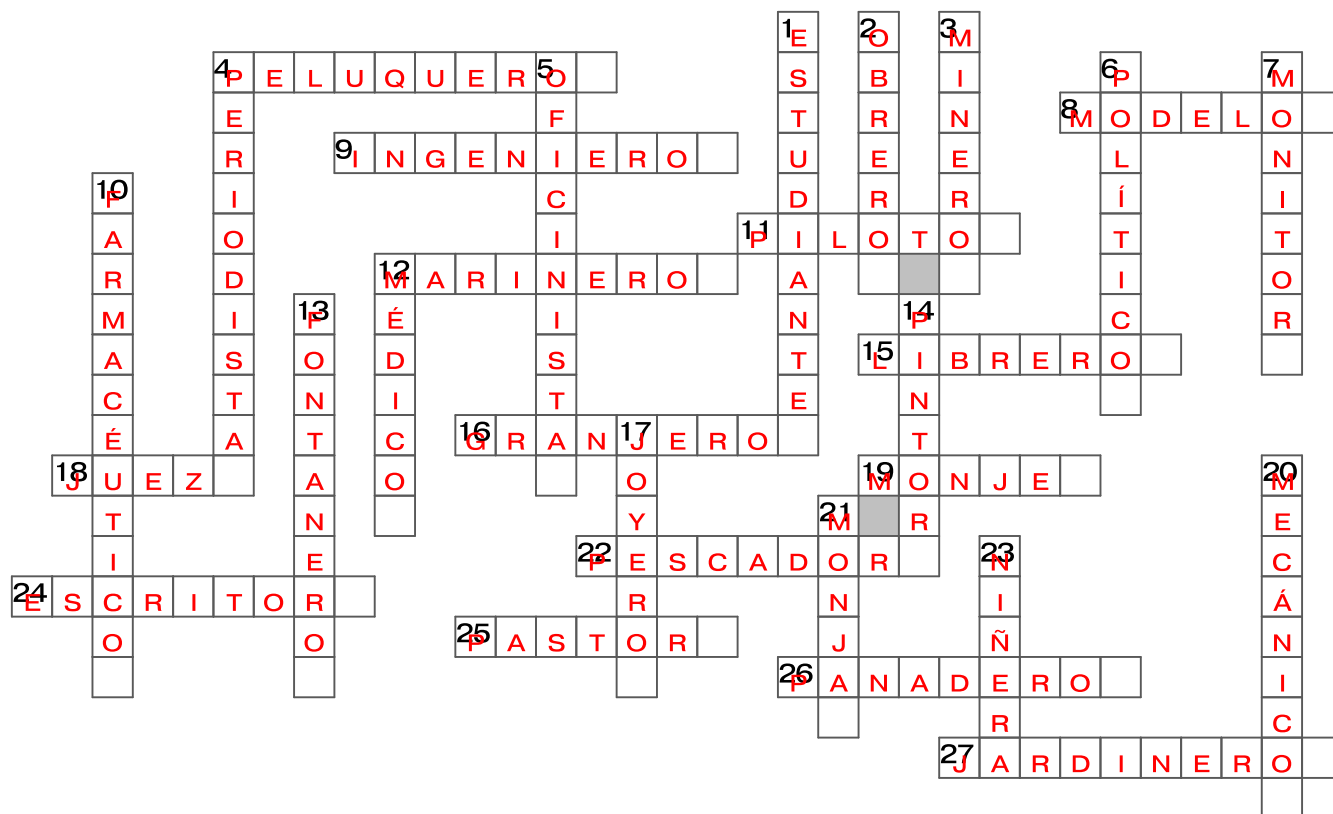
empleado

conductor

agricultor

carnicero

A. Using the Across and Down clues, write the corresponding Spanish term for each word in appropriate space on the grid below



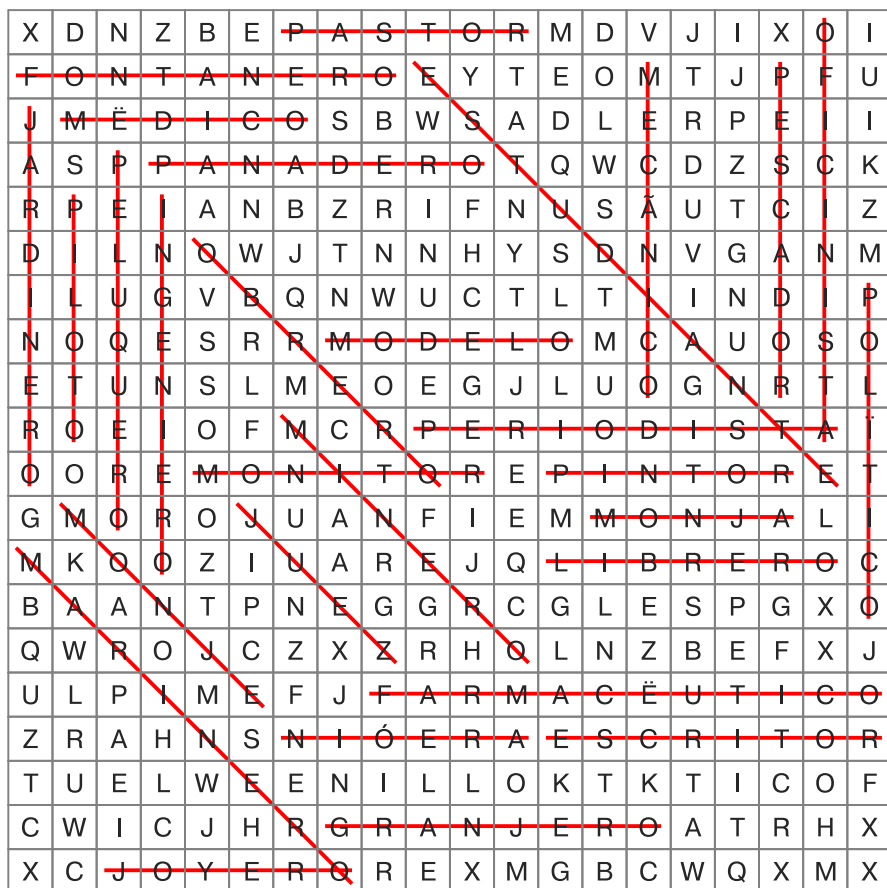
ACROSS

4. hairdresser
8. model
9. engineer
11. pilot
12. sailor
15. bookseller
16. farmer
18. judge
19. monk
22. fisherman
24. writer
25. shepherd
26. baker
27. gardener

DOWN

1. student
2. labourer
3. miner
4. journalist
5. office worker
6. politician
7. instructor
10. chemist
12. doctor
13. plumber
14. painter
17. jeweller
20. mechanic
21. nun
23. nanny

B. Find the hidden words. The words have been placed horizontally, vertically, or diagonally. When you locate a word, draw a circle around it.



fontanero

minero

escritor

mecánico

piloto

peluquero

monje

jardinero

monitor

juez

pintor

farmacéutico

granjero

modelo

oficinista

marinero

ingeniero

pescador

periodista

médico

estudiante

niñera

joyero

obrero

pastor

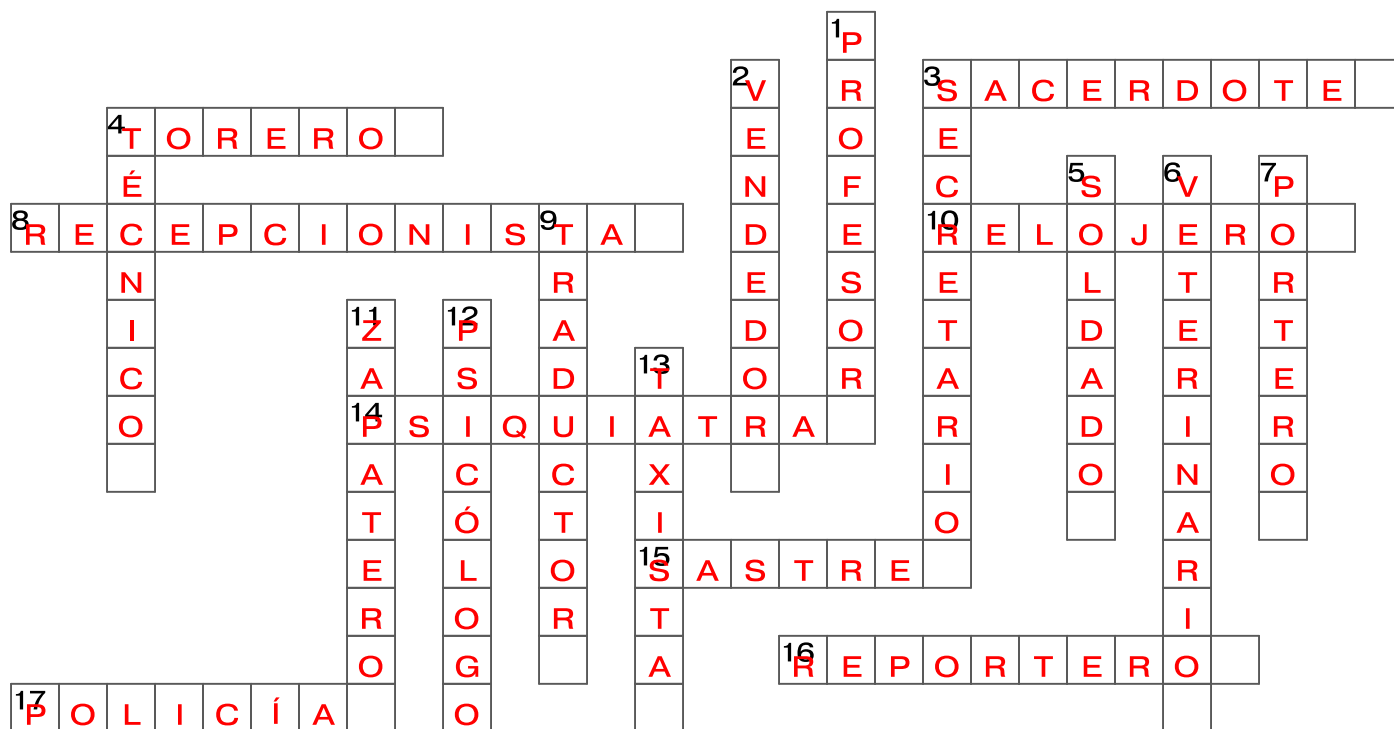
librero

político

panadero

monja

A. Using the Across and Down clues, write the corresponding Spanish term for each word in appropriate space on the grid below



ACROSS

- 3. priest
- 4. bullfighter
- 8. receptionist
- 10. watchmaker
- 14. psychiatrist
- 15. tailor
- 16. reporter
- 17. policeman

DOWN

- 1. teacher
- 2. salesman
- 3. secretary
- 4. technician
- 5. soldier
- 6. vet
- 7. caretaker
- 9. translator
- 11. shoemaker
- 12. psychologist
- 13. taxi driver

B. Find the hidden words. The words have been placed horizontally, vertically, or diagonally. When you locate a word, draw a circle around it.

S	D	Y	I	O	Y	V	T	O	R	E	R	O	H	X
O	E	P	W	A	R	E	L	O	J	E	R	O	Z	Q
L	G	V	E	N	D	E	D	O	R	R	S	L	B	W
D	P	R	E	C	E	P	C	I	O	N	I	S	T	A
A	S	V	E	T	E	R	I	N	A	R	I	O	G	P
D	I	R	W	C	S	E	C	R	E	T	A	R	I	O
O	C	J	E	C	T	E	C	N	I	C	O	H	G	L
Y	O	X	P	S	I	Q	U	I	A	T	R	A	U	I
V	L	S	W	J	T	R	A	D	U	C	T	O	R	C
F	O	A	Z	A	P	A	T	E	R	O	L	X	Y	I
S	G	S	Y	B	B	Q	R	Q	R	O	V	J	K	A
N	O	T	S	V	R	S	A	C	E	R	D	O	T	E
M	B	R	F	F	T	T	A	X	I	S	T	A	T	A
Q	F	E	R	C	R	E	P	O	R	T	E	R	O	E
D	G	B	F	U	P	R	O	F	E	S	O	R	M	J

traductor

psicólogo

secretario

recepcionista

psiquiatra

profesor

reportero

sacerdote

portero

relojero

técnico

soldado

taxista

torero

sastre

vendedor

veterinario

zapatero

policía

1. Match the words with the clues provided. Once the match is made, the number of the correct clue is placed in the proper space of the square that is marked by the letter of the matching word. If the words and clues are matched correctly, the magic square columns, rows, and diagonals, will add up to the same number.

A=8	B=11	C=13	D=2
E=1	F=14	G=12	H=7
I=10	J=5	K=3	L=16
M=15	N=4	O=6	P=9

1. customs officer
2. fireman
3. architect
4. employee
5. astronaut
6. dentist
7. priest
8. scientist

9. accountant
10. bank clerk
11. surgeon
12. builder
13. lorry driver
14. consultant
15. nurse
16. foreman

- | | | |
|---------------|---------------|----------------------|
| A. científico | B. cirujano | C. camionero |
| D. bombero | E. aduanero | F. asesor |
| G. albañil | H. cura | I. empleado de banco |
| J. astronauta | K. arquitecto | L. capataz |
| M. enfermero | N. empleado | O. dentista |
| P. contable | | |

There are letters missing in each word below. Print the complete word on the blank line beside each word with missing letters.

- | | |
|--|--|
| 2. _ S _ S _ R ASESOR | 17. C _ C _ N _ R _ COCINERO |
| 3. C _ RN _ C _ R _ CARNICERO | 18. C _ NT _ BL _ CONTABLE |
| 4. _ STR _ N _ _ T _ ASTRONAUTA | 19. C _ _ NTÍF _ C _ CIENTÍFICO |

- | | |
|---|---|
| 5. C _ ND _ CT _ R CONDUCTOR | 20. _ LB _ Ñ _ L ALBAÑIL |
| 6. C _ R _ J _ N _ CIRUJANO | 21. _ L _ CTR _ C _ ST _ ELECTRICISTA |
| 7. C _ M _ _ N _ R _ CAMIONERO | 22. C _ R _ CURA |
| 8. C _ P _ T _ Z CAPATAZ | 23. CR _ _ D _ CRIADO |
| 9. D _ P _ ND _ _ NT _ DEPENDIENTE | 24. C _ NT _ NT _ CANTANTE |
| 10. _ NF _ RM _ R _ ENFERMERO | 25. B _ S _ R _ R _ BASURERO |
| 11. _ RQ _ _ T _ CT _ ARQUITECTO | 26. C _ M _ R _ R _ / _ CAMARERO/A |
| 12. D _ NT _ ST _ DENTISTA | 27. _ MPL _ _ D _ EMPLEADO |
| 13. _ GR _ C _ LT _ R AGRICULTOR | 28. _ CT _ R / _ CTR _ Z ACTOR/ACTRIZ |
| 14. _ D _ _ N _ R _ ADUANERO | 29. B _ MB _ R _ BOMBERO |
| 15. C _ RT _ R _ CARTERO | 30. _ Z _ F _ T _ AZAFATA |
| 16. _ B _ G _ D _ ABOGADO | 31. _ MPL _ _ D _ D _ B _ NC _ EMPLEADO DE BANCO |

From the words provided for each clue, provide the letter of the word which best matches the clue.

32. **A** **singer**
A.CANTANTE B.ABOGADO C.EMPLEADO DE BANCO D.ADUANERO
33. **D** **butcher**
A.CANTANTE B.DENTISTA C.ADUANERO D.CARNICERO
34. **B** **driver**
A.CONTABLE B.CONDUCTOR C.AGRICULTOR D.BOMBERO
35. **B** **postman**
A.DENTISTA B.CARTERO C.ENFERMERO D.COCINERO
36. **A** **electrician**
A.ELECTRICISTA B.CRIADO C.ASTRONAUTA D.CONDUCTOR
37. **A** **scientist**
A.CIENTÍFICO B.CARTERO C.AZAFATA D.ASESOR
38. **B** **accountant**
A.ASESOR B.CONTABLE C.CURA D.EMPLEADO
39. **A** **nurse**
A.ENFERMERO B.ADUANERO C.ASTRONAUTA D.CONTABLE
40. **D** **cook**
A.EMPLEADO DE BANCO B.CAMARERO/A C.CARNICERO D.COCINERO

41. D **astronaut**
A.BASURERO B.CIENTÍFICO C.ENFERMERO D.ASTRONAUTA
42. A **shop assistant**
A.DEPENDIENTE B.ABOGADO C.CIRUJANO D.BASURERO
43. A **surgeon**
A.CIRUJANO B.ALBAÑIL C.AZAFATA D.CONTABLE
44. C **customs officer**
A.AZAFATA B.ASESOR C.ADUANERO D.CIRUJANO
45. C **dustman**
A.ELECTRICISTA B.DENTISTA C.BASURERO D.EMPLEADO
46. B **actor/actress**
A.ALBAÑIL B.ACTOR/ACTRIZ C.CAMIONERO D.BASURERO
47. A **consultant**
A.ASESOR B.CANTANTE C.CURA D.CIRUJANO
48. D **architect**
A.DENTISTA B.CONDUCTOR C.CAPATAZ D.ARQUITECTO
49. B **priest**
A.EMPLEADO B.CURA C.CARTERO D.BOMBERO
50. A **builder**
A.ALBAÑIL B.CIENTÍFICO C.CONTABLE D.DEPENDIENTE
51. A **bank clerk**
A.EMPLEADO DE BANCO B.CAPATAZ C.DEPENDIENTE D.ASTRONAUTA
52. C **lorry driver**
A.EMPLEADO DE BANCO B.DEPENDIENTE C.CAMIONERO D.CARNICERO
53. A **farmer**
A.AGRICULTOR B.COCINERO C.CIRUJANO D.CAMARERO/A
54. D **lawyer**
A.ASESOR B.EMPLEADO C.CIRUJANO D.ABOGADO
55. B **dentist**
A.ENFERMERO B.DENTISTA C.BASURERO D.ELECTRICISTA
56. D **waiter/waitress**
A.CIRUJANO B.AGRICULTOR C.ASTRONAUTA D.CAMARERO/A
57. D **air hostess**
A.CARTERO B.EMPLEADO DE BANCO C.DENTISTA D.AZAFATA
58. D **employee**
A.CONTABLE B.ACTOR/ACTRIZ C.EMPLEADO DE BANCO D.EMPLEADO

59. **B** **fireman**
A.ASESOR B.BOMBERO C.DEPENDIENTE D.CONTABLE
60. **D** **foreman**
A.DEPENDIENTE B.CAMARERO/A C.ADUANERO D.CAPATAZ
61. **C** **servant**
A.CONDUCTOR B.AZAFATA C.CRIADO D.CAMIONERO

The words on the list are split, with the first part of the word listed on the left-hand side of the worksheet and the second part listed somewhere on the right-hand side of the worksheet. Draw lines to connect the two parts of each word. Then write the complete word on the blank line.

62. abog	abogado		ante
63. basu	basurero		sor
64. enfe	enfermero		ero
65. cond	conductor		de banco
66. cri	criado		actriz
67. dent	dentista		iente
68. empleado	empleado de banco		able
69. cu	cura		ado
70. cont	contable		onero
71. cant	cantante		ista
72. carn	carnicero		ero
73. ase	asesor		icero
74. cami	camionero		rmero
75. cart	cartero		ado
76. bomb	bombero		tecto
77. actor/	actor/actriz		ra
78. arqu	arquitecto		uctor
79. depend	dependiente		rero

62. lawyer
63. dustman
64. nurse
65. driver
66. servant

67. dentist
68. bank clerk
69. priest
70. accountant
71. singer

- 72. butcher
- 73. consultant
- 74. lorry driver
- 75. postman

- 76. fireman
- 77. actor/actress
- 78. architect
- 79. shop assistant

For each word listed, write a short sentence in English describing a typical activity associated with the profession in question. You may use your text book to look up any unfamiliar word. (More advanced students can attempt writing the sentence in Spanish)

- 80. **CRIADO** _____
- 81. **CAMIONERO** _____
- 82. **EMPLEADO** _____
- 83. **CARTERO** _____
- 84. **BASURERO** _____
- 85. **AGRICULTOR** _____
- 86. **ALBAÑIL** _____
- 87. **BOMBERO** _____
- 88. **ARQUITECTO** _____
- 89. **ACTOR/ACTRIZ** _____
- 90. **ABOGADO** _____
- 91. **ASESOR** _____
- 92. **EMPLEADO DE BANCO** _____
- 93. **CARNICERO** _____
- 94. **DEPENDIENTE** _____
- 95. **CANTANTE** _____
- 96. **CONTABLE** _____
- 97. **DENTISTA** _____
- 98. **CAPATAZ** _____
- 99. **ENFERMERO** _____
- 100. **ASTRONAUTA** _____
- 101. **CONDUCTOR** _____

102. **CAMARERO/A** _____
103. **CIENTÍFICO** _____
104. **CURA** _____
105. **CIRUJANO** _____
106. **COCINERO** _____
107. **AZAFATA** _____
108. **ADUANERO** _____
109. **ELECTRICISTA** _____

The letters of the words below are jumbled. Figure out what the Spanish word is using the English clues and write it on the blank line provided.

- | | |
|---|---|
| 110. OREMREFNE ENFERMERO | 125. ORENOIMAC CAMIONERO |
| 111. ORETRAC CARTERO | 126. ORENAUDA ADUANERO |
| 112. ONAJURIC CIRUJANO | 127. ORENICOC COCINERO |
| 113. ODAGOBAB ABOGADO | 128. ATAFAZA AZAFATA |
| 114. ORERUSAB BASURERO | 129. ARUC CURA |
| 115. ZIRTCA/ROTCA ACTOR/ACTRIZ | 130. ZATAPAC CAPATAZ |
| 116. ATUANORTSA ASTRONAUTA | 131. ROTLUCIRGA AGRICULTOR |
| 117. ODAELPME EMPLEADO | 132. OTCETIUQRA ARQUITECTO |
| 118. ELBATNOC CONTABLE | 133. A/ORERAMAC CAMARERO/A |
| 119. ATSITNED DENTISTA | 134. ROSESA ASESOR |
| 120. ORECINRAC CARNICERO | 135. OREBMOB BOMBERO |
| 121. ROTCUDNOC CONDUCTOR | 136. OCNABEDODAELPME EMPLEADO DE BANCO |
| 122. ETNEIDNEPED DEPENDIENTE | 137. ODAIRC CRIADO |
| 123. OCIFÍTNEIC CIENTÍFICO | 138. LIÑABLA ALBAÑIL |
| 124. ETNATNAC CANTANTE | 139. ATSICIRTCELE ELECTRICISTA |

110. nurse
111. postman
112. surgeon
113. lawyer
114. dustman
115. actor/actress

116. astronaut
117. employee
118. accountant
119. dentist
120. butcher
121. driver

- | | |
|----------------------|----------------------|
| 122. shop assistant | 131. farmer |
| 123. scientist | 132. architect |
| 124. singer | 133. waiter/waitress |
| 125. lorry driver | 134. consultant |
| 126. customs officer | 135. fireman |
| 127. cook | 136. bank clerk |
| 128. air hostess | 137. servant |
| 129. priest | 138. builder |
| 130. foreman | 139. electrician |

- A. Match the words with the clues provided. Once the match is made, the number of the correct clue is placed in the proper space of the square that is marked by the letter of the matching word. If the words and clues are matched correctly, the magic square columns, rows, and diagonals, will add up to the same number.

A=9	B=2	C=16	D=7
E=15	F=8	G=10	H=1
I=4	J=11	K=5	L=14
M=6	N=13	O=3	P=12

- | | |
|---------------|-----------------|
| 1. nun | 9. bookseller |
| 2. journalist | 10. student |
| 3. mechanic | 11. painter |
| 4. shepherd | 12. politician |
| 5. writer | 13. hairdresser |
| 6. judge | 14. doctor |
| 7. pilot | 15. monk |
| 8. baker | 16. gardener |

- | | | | | |
|-------------|---------------|--------------|--------------|-------------|
| A. librero | B. periodista | C. jardinero | D. piloto | E. monje |
| F. panadero | G. estudiante | H. monja | I. pastor | J. pintor |
| K. escritor | L. médico | M. juez | N. peluquero | O. mecánico |
| P. político | | | | |

- B. There are letters missing in each word below. Print the complete word on the blank line beside each word with missing letters.

- | | |
|---|---|
| 1. _ BR _ R _ OBRERO | 16. GR _ NJ _ R _ GRANJERO |
| 2. _ NG _ N _ _ R _ INGENIERO | 17. M _ N _ T _ R MONITOR |
| 3. J _ RD _ N _ R _ JARDINERO | 18. P _ L _ Q _ _ R _ PELUQUERO |
| 4. _ F _ C _ N _ ST _ OFICINISTA | 19. _ ST _ D _ _ NT _ ESTUDIANTE |

- | | |
|---------------------------------------|---|
| 5. P _ NT _ R PINTOR | 20. P _ R _ _ D _ ST _ PERIODISTA |
| 6. L _ BR _ R _ LIBRERO | 21. M _ NJ _ MONJE |
| 7. N _ Ñ _ R _ NIÑERA | 22. P _ ST _ R PASTOR |
| 8. M _ N _ R _ MINERO | 23. _ SCR _ T _ R ESCRITOR |
| 9. P _ N _ D _ R _ PANADERO | 24. F _ RM _ CÉ _ T _ C _ FARMACÉUTICO |
| 10. M _ D _ L _ MODELO | 25. M _ NJ _ MONJA |
| 11. M _ CÁN _ C _ MECÁNICO | 26. J _ _ Z JUEZ |
| 12. P _ LÍT _ C _ POLÍTICO | 27. P _ SC _ D _ R PESCADOR |
| 13. J _ Y _ R _ JOYERO | 28. P _ L _ T _ PILOTO |
| 14. F _ NT _ N _ R _ FONTANERO | 29. M _ R _ N _ R _ MARINERO |
| 15. MÉD _ C _ MÉDICO | |

C. From the words provided for each clue, provide the letter of the word which best matches the clue.

- B** **chemist**
A.MÉDICO B.FARMACÉUTICO C.MONJE D.MINERO
- D** **miner**
A.PILOTO B.JOYERO C.MODELO D.MINERO
- C** **model**
A.INGENIERO B.MÉDICO C.MODELO D.POLÍTICO
- C** **instructor**
A.JOYERO B.MARINERO C.MONITOR D.MONJE
- C** **farmer**
A.INGENIERO B.MONITOR C.GRANJERO D.PERIODISTA
- C** **plumber**
A.ESTUDIANTE B.MONITOR C.FONTANERO D.OBRERO
- A** **journalist**
A.PERIODISTA B.ESTUDIANTE C.PASTOR D.OBRERO
- B** **shepherd**
A.PANADERO B.PASTOR C.ESCRITOR D.JUEZ
- A** **student**
A.ESTUDIANTE B.MONITOR C.PELUQUERO D.MECÁNICO
- A** **nanny**
A.NIÑERA B.PELUQUERO C.MONITOR D.PINTOR

11. D **monk**
A.JUEZ B.MONITOR C.ESTUDIANTE D.MONJE
12. D **engineer**
A.PILOTO B.LIBRERO C.OBRERO D.INGENIERO
13. C **sailor**
A.MONJA B.MECÁNICO C.MARINERO D.INGENIERO
14. B **fisherman**
A.FONTANERO B.PESCADOR C.OBRERO D.ESTUDIANTE
15. B **judge**
A.JOYERO B.JUEZ C.ESCRITOR D.INGENIERO
16. A **gardener**
A.JARDINERO B.POLÍTICO C.PILOTO D.PINTOR
17. A **labourer**
A.OBRERO B.NIÑERA C.MARINERO D.MÉDICO
18. D **hairdresser**
A.NIÑERA B.MODELO C.GRANJERO D.PELUQUERO
19. A **doctor**
A.MÉDICO B.MONJE C.PERIODISTA D.OBRERO
20. C **pilot**
A.JUEZ B.LIBRERO C.PILOTO D.POLÍTICO
21. C **baker**
A.OFICINISTA B.NIÑERA C.PANADERO D.OBRERO
22. D **office worker**
A.INGENIERO B.ESTUDIANTE C.PINTOR D.OFICINISTA
23. D **bookseller**
A.JARDINERO B.PELUQUERO C.MONJE D.LIBRERO
24. B **painter**
A.GRANJERO B.PINTOR C.PELUQUERO D.MECÁNICO
25. D **politician**
A.PELUQUERO B.PILOTO C.PANADERO D.POLÍTICO
26. B **writer**
A.JOYERO B.ESCRITOR C.ESTUDIANTE D.LIBRERO
27. B **jeweller**
A.MECÁNICO B.JOYERO C.GRANJERO D.LIBRERO
28. B **nun**
A.MINERO B.MONJA C.MECÁNICO D.FARMACÉUTICO

29. **C mechanic**

A.MODELO B.PELUQUERO C.MECÁNICO D.MONJE

D. The words on the list are split, with the first part of the word listed on the left-hand side of the worksheet and the second part listed somewhere on the right-hand side of the worksheet. Draw lines to connect the two parts of each word. Then write the complete word on the blank line.

1. ofici	oficinista		anero
2. pil	piloto		tico
3. mo	monje		ero
4. moni	monitor		ero
5. polí	político		nico
6. niñ	niñera		nista
7. estud	estudiante		ez
8. mecá	mecánico		dista
9. pin	pintor		oto
10. ju	juez		ico
11. font	fontanero		ético
12. farmac	farmacéutico		tor
13. libr	librero		era
14. pana	panadero		tor
15. pelu	peluquero		niero
16. inge	ingeniero		dero
17. méd	médico		quero
18. pesc	pescador		iante
19. mo	monja		ador
20. pas	pastor		nja
21. perio	periodista		nje
22. min	minero		tor

1. office worker	5. politician
2. pilot	6. nanny
3. monk	7. student
4. instructor	8. mechanic

- | | |
|-----------------|----------------|
| 9. painter | 16. engineer |
| 10. judge | 17. doctor |
| 11. plumber | 18. fisherman |
| 12. chemist | 19. nun |
| 13. bookseller | 20. shepherd |
| 14. baker | 21. journalist |
| 15. hairdresser | 22. miner |

E. For each word listed, write a short sentence in English describing a typical activity associated with the profession in question. You may use your text book to look up any unfamiliar word. (More advanced students can attempt writing the sentence in Spanish)

1. **PELUQUERO** _____
2. **POLÍTICO** _____
3. **MODELO** _____
4. **JUEZ** _____
5. **OBRERO** _____
6. **OFICINISTA** _____
7. **MINERO** _____
8. **MONITOR** _____
9. **PERIODISTA** _____
10. **ESCRITOR** _____
11. **NIÑERA** _____
12. **FONTANERO** _____
13. **MÉDICO** _____
14. **MECÁNICO** _____
15. **JARDINERO** _____
16. **MONJA** _____
17. **FARMACÉUTICO** _____
18. **INGENIERO** _____
19. **PINTOR** _____
20. **PANADERO** _____
21. **PESCADOR** _____

22. **PILOTO** _____
23. **MONJE** _____
24. **ESTUDIANTE** _____
25. **MARINERO** _____
26. **JOYERO** _____
27. **LIBRERO** _____
28. **GRANJERO** _____
29. **PASTOR** _____

F. The letters of the words below are jumbled. Figure out what the Spanish word is using the English clues and write it on the blank line provided.

- | | |
|---------------------------------------|--|
| 1. ORPNIT PINTOR | 16. PTRSOA PASTOR |
| 2. NJOEM MONJE | 17. IOOÍCPTL POLÍTICO |
| 3. IOMOTRN MONITOR | 18. TEASUIDNTE ESTUDIANTE |
| 4. NIMAERRO MARINERO | 19. MNIROE MINERO |
| 5. JNMAO MONJA | 20. JRRODANEI JARDINERO |
| 6. IIFICSNATO OFICINISTA | 21. GOJAERNR GRANJERO |
| 7. OLOEDM MODELO | 22. PTILOO PILOTO |
| 8. PRANAEDO PANADERO | 23. UEZJ JUEZ |
| 9. MIDOÉC MÉDICO | 24. IDPTOAIRES PERIODISTA |
| 10. SACRPOED PESCADOR | 25. EBORRO OBRERO |
| 11. RQPUOEULE PELUQUERO | 26. NIMÁECCO MECÁNICO |
| 12. EBOIRRL LIBRERO | 27. ESCITROR ESCRITOR |
| 13. NAFOONERT FONTANERO | 28. RAOAFÉCMUCIT FARMACÉUTICO |
| 14. JOOEYR JOYERO | 29. RNIAÑE NIÑERA |
| 15. NNIEGREIO INGENIERO | |

- | | |
|---------------|----------------|
| 1. painter | 6. hairdresser |
| 2. instructor | 7. plumber |
| 3. nun | 8. engineer |
| 4. model | 9. politician |
| 5. doctor | 10. miner |

- | | |
|-------------------|----------------|
| 11. farmer | 21. bookseller |
| 12. judge | 22. jeweller |
| 13. labourer | 23. shepherd |
| 14. writer | 24. student |
| 15. nanny | 25. gardener |
| 16. monk | 26. pilot |
| 17. sailor | 27. journalist |
| 18. office worker | 28. mechanic |
| 19. baker | 29. chemist |
| 20. fisherman | |

- A. Match the words with the clues provided. Once the match is made, the number of the correct clue is placed in the proper space of the square that is marked by the letter of the matching word. If the words and clues are matched correctly, the magic square columns, rows, and diagonals, will add up to the same number.

A=6	B=3	C=16	D=9
E=15	F=10	G=5	H=4
I=1	J=8	K=11	L=14
M=12	N=13	O=2	P=7

- | | |
|-----------------|------------------|
| 1. taxi driver | 9. psychiatrist |
| 2. priest | 10. technician |
| 3. caretaker | 11. reporter |
| 4. receptionist | 12. soldier |
| 5. teacher | 13. salesman |
| 6. vet | 14. watchmaker |
| 7. secretary | 15. shoemaker |
| 8. tailor | 16. psychologist |

- | | | | |
|----------------|-------------|--------------|------------------|
| A. veterinario | B. portero | C. psicólogo | D. psiquiatra |
| E. zapatero | F. técnico | G. profesor | H. recepcionista |
| I. taxista | J. sastre | K. reportero | L. relojero |
| M. soldado | N. vendedor | O. sacerdote | P. secretario |

- B. There are letters missing in each word below. Print the complete word on the blank line beside each word with missing letters.

- | | |
|---|---|
| 1. T _ R _ R _ TORERO | 11. V _ ND _ D _ R VENDEDOR |
| 2. V _ T _ R _ N _ R _ _ VETERINARIO | 12. PS _ Q _ _ _ TR _ PSIQUIATRA |
| 3. P _ L _ CÍ _ POLICÍA | 13. R _ L _ J _ R _ RELOJERO |
| 4. R _ C _ PC _ _ N _ ST _ RECEPCIONISTA | 14. R _ P _ RT _ R _ REPORTERO |

- | | |
|---------------------------------------|-------------------------------------|
| 5. Z _ P _ T _ R _ ZAPATERO | 15. PR _ F _ S _ R PROFESOR |
| 6. TÉCN _ C _ TÉCNICO | 16. PS _ CÓL _ G _ PSICÓLOGO |
| 7. S _ C _ RD _ T _ SACERDOTE | 17. P _ RT _ R _ PORTERO |
| 8. S _ CR _ T _ R _ SECRETARIO | 18. T _ X _ ST _ TAXISTA |
| 9. TR _ D _ CT _ R TRADUCTOR | 19. S _ STR _ SASTRE |
| 10. S _ LD _ D _ SOLDADO | |

C. From the words provided for each clue, provide the letter of the word which best matches the clue.

1. **D policeman**
A.PROFESOR B.SACERDOTE C.TORERO D.POLICÍA
2. **C bullfighter**
A.TRADUCTOR B.POLICÍA C.TORERO D.RELOJERO
3. **D taxi driver**
A.ZAPATERO B.SASTRE C.SACERDOTE D.TAXISTA
4. **A priest**
A.SACERDOTE B.PSIQUIATRA C.RECEPCIONISTA D.POLICÍA
5. **D watchmaker**
A.TRADUCTOR B.SACERDOTE C.PSICÓLOGO D.RELOJERO
6. **D receptionist**
A.PROFESOR B.TRADUCTOR C.ZAPATERO D.RECEPCIONISTA
7. **A psychiatrist**
A.PSIQUIATRA B.SASTRE C.TAXISTA D.VETERINARIO
8. **A technician**
A.TÉCNICO B.SACERDOTE C.RELOJERO D.PORTERO
9. **B vet**
A.VENDEDOR B.VETERINARIO C.RECEPCIONISTA D.SECRETARIO
10. **C psychologist**
A.SACERDOTE B.REPORTERO C.PSICÓLOGO D.PORTERO
11. **B salesman**
A.RELOJERO B.VENDEDOR C.RECEPCIONISTA D.REPORTERO
12. **A tailor**
A.SASTRE B.VENDEDOR C.RELOJERO D.SECRETARIO

13. B **shoemaker**
A.SECRETARIO B.ZAPATERO C.PROFESOR D.TRADUCTOR
14. D **soldier**
A.TRADUCTOR B.ZAPATERO C.PSIQUIATRA D.SOLDADO
15. B **secretary**
A.RECEPCIONISTA B.SECRETARIO C.TAXISTA D.SACERDOTE
16. A **teacher**
A.PROFESOR B.TAXISTA C.SOLDADO D.PORTERO
17. A **caretaker**
A.PORTERO B.TRADUCTOR C.TAXISTA D.RELOJERO
18. B **reporter**
A.PSICÓLOGO B.REPORTERO C.TORERO D.POLICÍA
19. A **translator**
A.TRADUCTOR B.VENDEDOR C.PORTERO D.TÉCNICO

D. The words on the list are split, with the first part of the word listed on the left-hand side of the worksheet and the second part listed somewhere on the right-hand side of the worksheet. Draw lines to connect the two parts of each word. Then write the complete word on the blank line.

1. secre	secretario	•	•	ado
2. sas	sastre	•	•	jero
3. psic	psicólogo	•	•	ólogo
4. relo	relojero	•	•	ico
5. repo	reportero	•	•	tre
6. poli	policía	•	•	ero
7. sold	soldado	•	•	esor
8. prof	profesor	•	•	rdote
9. tor	torero	•	•	ionista
10. sace	sacerdote	•	•	tario
11. port	portero	•	•	rtero
12. psiqu	psiquiatra	•	•	uctor
13. taxi	taxista	•	•	cía
14. veteri	veterinario	•	•	sta
15. zapa	zapatero	•	•	ero
16. técn	técnico	•	•	nario
17. trad	traductor	•	•	edor
18. recepc	recepcionista	•	•	iatra
19. vend	vendedor	•	•	tero

1. secretary
2. tailor
3. psychologist
4. watchmaker
5. reporter
6. policeman
7. soldier
8. teacher
9. bullfighter
10. priest

11. caretaker
12. psychiatrist
13. taxi driver
14. vet
15. shoemaker
16. technician
17. translator
18. receptionist
19. salesman

E. For each word listed, write a short sentence in English describing a typical activity associated with the profession in question. You may use your text book to look up any unfamiliar word. (More advanced students can attempt writing the sentence in Spanish)

1. **POLICÍA** _____
2. **PORTERO** _____
3. **PROFESOR** _____
4. **PSICÓLOGO** _____
5. **PSIQUIATRA** _____
6. **RECEPCIONISTA** _____
7. **RELOJERO** _____
8. **REPORTERO** _____
9. **SACERDOTE** _____
10. **SASTRE** _____
11. **SECRETARIO** _____
12. **SOLDADO** _____
13. **TAXISTA** _____
14. **TÉCNICO** _____
15. **TORERO** _____
16. **TRADUCTOR** _____
17. **VENDEDOR** _____
18. **VETERINARIO** _____
19. **ZAPATERO** _____

F. The letters of the words below are jumbled. Figure out what the Spanish word is using the English clues and write it on the blank line provided.

- | | |
|-------------------------------------|--|
| 1. DCUTOARRT TRADUCTOR | 11. IOCPLAÍ POLICÍA |
| 2. TCNÉICO TÉCNICO | 12. EONITRAIEVR VETERINARIO |
| 3. FSROPEOR PROFESOR | 13. OJRERELO RELOJERO |
| 4. SOGILPÓCO PSICÓLOGO | 14. APEZAORT ZAPATERO |

- | | |
|--------------------------------|---------------------------------------|
| 5. SDEROEATC SACERDOTE | 15. RAEOISCRET SECRETARIO |
| 6. ETRORO TORERO | 16. RESTAS SASTRE |
| 7. SXTIATA TAXISTA | 17. CEIPNOSRTCEIA RECEPCIONISTA |
| 8. IAPIAURQST PSIQUIATRA | 18. OSDDLOA SOLDADO |
| 9. EPRROROET REPORTERO | 19. ETPORRO PORTERO |
| 10. EODNDVER VENDEDOR | |

- | | |
|-----------------|------------------|
| 1. translator | 11. policeman |
| 2. technician | 12. vet |
| 3. teacher | 13. watchmaker |
| 4. psychologist | 14. shoemaker |
| 5. priest | 15. secretary |
| 6. bullfighter | 16. tailor |
| 7. taxi driver | 17. receptionist |
| 8. psychiatrist | 18. soldier |
| 9. reporter | 19. caretaker |
| 10. salesman | |

LESSON PLAN IDEAS | LEARNING ACTIVITIES



Creative Learning Ltd.

OBJECTIVE:

To learn and practice vocabulary regarding: jobs, professions and the world of work. Place particular attention on the correct use of gender. Practice putting together simple sentences both in question and answer form and practice asking/answering in pairs.

LEVEL: Beginners

ACTIVITY 1:

Class activity aimed at improving pronunciation and practice differentiating between genders

MUSICO	SECRETARIO SECRETARIA	INGENIERO INGENIERA	JARDINERO JARDINERA
ENFERMER O ENFERMER A	ESTUDIANTE	FONTANERO FONTANERA	TORERO TORERA
ABOGADO ABOGADA	AGRICULTOR AGRICULTOR A	CAMARERO CAMARERA	PASTOR PASTORA
ACTOR ACTRIZ	ARQUITECTO ARQUITECTA	PANADERO PANADERA	RECEPCIONIST A
DENTISTA	ASTRONAUTA	MEDICO	PESCADOR PESCADORA
ARTISTA	MECANICO MECANICA	CAMIONERO CAMIONERA	PILOTO
COCINERO COCINERA	BOMBERO BOMBERA	NINERO NINERA	CARTERO CARTERA
JUEZ JUEZA	VETERINARIO VETERINARIA	PINTOR PINTORA	ESCRITOR ESCRITORA
PROFESOR PROFESOR A	POLICIA	DEPENDIENT E DEPENDIENT A	BOXEADOR BOXEADORA

ACTIVITY 2:

Some of the vocabulary terms are very similar to English, whilst some are not. This activity consists in grouping the vocabulary terms into two groups: PALABRA CONOCIDA and PALABRA DESCONOCIDA. This can be done as a brainstorming activity involving the whole class, or as an independent activity with each student working individually (5 – 10 min).

PALABRA CONOCIDA		PALABRA DESCONOCIDA	
Espanol	Ingles	Espanol	Ingles

ACTIVIDAD 3:

Practice vocabulary with some word matching exercises. Begin by showing the class a transparency with the list of words below (include professions of your choice). The transparency is to be shown for 1 minute during which the students are to memorize as many words as possible. Create several transparencies so to cover the entire professions-related vocabulary and include this minute exercise at the start of each lesson until class has memorized the terms sufficiently well.

PANADERO/A	BAKER
PESCADOR/A	FISHERMAN
ESCRITOR/A	WRITER
AZAFATO/A	FLIGHT ATTENDANT
ESTUDIANTE	STUDENT
ALBAÑIL	BUILDER
CONDUCTOR DE AUTOBUS	BUS DRIVER
POLITICO/A	POLITICIAN
TAXISTA	TAXI DRIVER
TRADUCTOR/A	TRANSLATOR
SOLDADO	SOLDIER
JUEZ/A	JUDGE
ASTRONAUTA	ASTRONAUT



INGENIERO/A	ENGINEER
CAMARERO/A	WAITER/WAITRESS
DIRECTOR/A	MANAGER
BOMBERO/A	FIREMAN
CANTANTE	SINGER
PROFESOR/A	TEACHER
ENFERMERO/A	NURSE
CARPINTERO/A	CARPENTER
FONTANERO/A	PLUMBER
POLICIA	POLICEMAN/WOMAN
MECANICO/A	MECHANIC
DENTISTA	DENTIST
JARDINERO/A	GARDENER
MEDICO	DOCTOR
LECHERO/A	MILKMAN/WOMAN
AGRICULTOR/A	FARMER
PERIODISTA	JOURNALIST
CARNICERO/A	BUTCHER
COCINERO/A	COOK
MUSICO/A	MUSICIAN
VETERINARIO/A	VET
PILOTO	PILOT
ARTISTA	ARTIST
PSICOLOGO/A	PSYCHOLOGIST
CARTERO	POSTMAN
DEPENDIENTE/A	SHOP ASSISTANT
PELUQUERO	HAIRDRESSER/BARBER
ACTOR/ACTRIZ	ACTOR/ACTRESS
ABOGADO/A	LAWYER
ELECTRICISTA	ELECTRICIAN

ACTIVITY 4:

Refer to activities from the **Profesiones 1** bundle. This activity is for students to do independently.

Profesiones 1 contains word searches and crosswords with the various professions vocabulary terms. The “word searching” process is a very efficient way of learning vocabulary without using direct memorisation.



Creative Learning Ltd.

ACTIVITY 5:

Put students in pairs and get them to practice basic phrases related to the professions topic:

*"Nothing is more powerful than the union of passion
with a correct channelling of one's creativity"*

EN QUE TRABAJA TU... (PADRE,MADRE,HERMANO,HERMANA...)?

What is your(.....)'s job?

MI (PADRE,MADRE,HERMANO,HERMANA...) ES.....

My (.....) is.....(occupation)

ACTIVITY 6:

Spanish vocabulary terms for profession tend to end in one of the following 4 suffixes:

-ERO/A, -ISTA, -ANTE y OR/A

BAKER	BUS DRIVER	JUDGE
FISHERMAN	POLITICIAN	ASTRONAUT
WRITER	TAXI DRIVER	ENGINEER
FLIGHT ATTENDANT	TRANSLATOR	STUDENT
	SOLDIER	BUILDER

-ERO/A,	-ISTA	-ANTE	OR/A	OTRAS

JUEGOS:**Juego de Memoria:**

Creative Learning Ltd.

PLAYERS:

This game can be played in pairs or in teams.

*"Nothing is more powerful than the union of passion
with a correct channelling of one's creativity"*

RULES:

Turn the flashcards facing downwards, the first player will raise two cards trying to match the Spanish with its corresponding English. The following player will do the same and so on...The winner will be the one that makes the highest number valid matches.

Example:

The first player raises a card and the profession turns out to be *periodista*. He will then raise a card of his choice from the English batch. If he raises *journalist*, he will have formed his first valid match and gets another turn. If he picks any other card other than journalist, it will then be the following player's turn.

Juego de la Baraja:**PLAYERS:**

This game can be played in pairs or in small teams.

RULES:

Each player receives 5 cards. The remaining cards are put together at the centre of the table, so all players have easy access to them. The first player will have to pick a card and will look if has matching card in Spanish/English amongst the 5 cards that he was given at the beginning. If he does, he will put it on the side and ask the player on the right if he happens to have a the matching card. Turn goes then to the following player. The winner is the player that gets rid of all his cards first.

Example:

The first player picks the first card out of the bundle in the middle. He will then look at his 5 starter cards to see if he has any matches. If he picked the "*Postman*" and doesn't have the matching Spanish card in his starter 5, he will then ask the second player "*Tienes Cartero?*". If the second player has that particular card in his starter 5, he will then have to give it to player 1. He then picks a card out of the middle bundle and process repeats.

Trivia de las Profesiones

PLAYERS: 2-6 small teams

RULES: Its played in a very similar way to standard Trivia. There are 5 colours, each one belongs to a different category of questions. Each team will pick a colour (orange,yellow, red, blue, green), and will grab a counter of the same colour (to move around the board). Each team will throw the dice and depending on which space they land on, they will have to answer questions corresponding to that colour (which will be asked by the teacher). Each time a team gets to the final triangle at the centre of the board, they will receive a piece of the hexagon that they have to put together. The aim is to complete the 6-

coloured hexagon by winning a piece of each different colour. The winning team is the one that completes the hexagon first.

Creative Learning Ltd.

*"Nothing is more powerful than the union of passion
with a correct channelling of one's creativity"*

COLOUR CATEGORIES

Green: Finding someone in relation to a particular profession

CATEGORÍA VERDE

Nombra a alguien famoso que...

sea profesora
sea médico
sea agricultor
sea estudiante
sea camarero
sea abogada
sea policía
sea enfermera
sea pescador

Yellow: Saying if the information is true or false

CATEGORÍA AMARILLA

Verdad o mentira...

Fireman significa *cartero*
Veterinario significa *vet*
Espa´a hay *toreros*
Piloto significa *pilot*
Actor es para hombre y *actriz* para mujer
En Nueva Zelanda no hay *agricultores*
Electrician significa *electrodoméstico*
Periodisto es para hombre y *periodista* para mujer
Policía es para hombre y para mujer



Creative Learning Ltd.

Blue: Name professions with particular features

*"Nothing is more powerful than the union of passion
with a correct channelling of one's creativity"*

CATEGORÍA AZUL

Nombra una profesión...

que empiece por P
en relación con el mar
en relación con animales
en relación con el aire
en relación con la escuela
que empiece por M
en relación con el arte
en relación con el mercado
que empiece por C

Orange: Drawing or acting out a profession

CATEGORÍA NARANJA

Dibuja o mimo

cartero
mecánico
estudiante
camionero/a
lechero/a
profesor/a
escritor/a
pastor/a
médico/a



Red: How do you say a profession in English or Spanish?

Creative Learning Ltd.

CATEGORÍA ROJA

¿Cómo se dice...?

profesor en inglés

student en español

cartero en inglés

mechanic en español

fireman en español

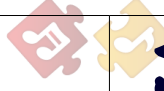
policía en inglés

pilot en español

singer en español

actress en español

CAMARERA	AGRICULTOR	BOMBERO	CARTERO
ARTISTA	MEDICO	PROFESORA	POLICIA
DEPENDIENTE	DENTISTA	CANTANTE	PERIODISTA
PESCADOR	CONDUCTOR DE AUTOBUS	POLITICO	ACTRIZ



Creative Learning Ltd.

Nothing is more powerful than the union of passion
with a correct channelling of a creativity"

WAITRESS	FARMER	FIREMAN	POSTMAN
ARTIST	DOCTOR	TEACHER	POLICEMAN
SHOP ASSISTANT	DENTIST	SINGER	JOURNALIST
FISHERMAN	BUS DRIVER	POLITICIAN	ACTRESS



Creative Learning Ltd.

"Nothing is more powerful than the union of passion
with a correct channel for one's creativity"



Creative Learning Ltd.

*"Nothing is more powerful than the union of passion
with a correct channelling of one's creativity"*

MECANICO	ABOGADA	ESCRITOR	TAXISTA
LECHERO	MUSICO	DIRECTOR	VETERINARIO
PILOTO	PASTOR	JARDINERA	AZAFATA
CAMIONERA	PANADERA	PINTORA	RECEPCIONISTA



Creative Learning Ltd.

*"Nothing is more powerful than the union of passion
with a correct channelling of one's creativity"*

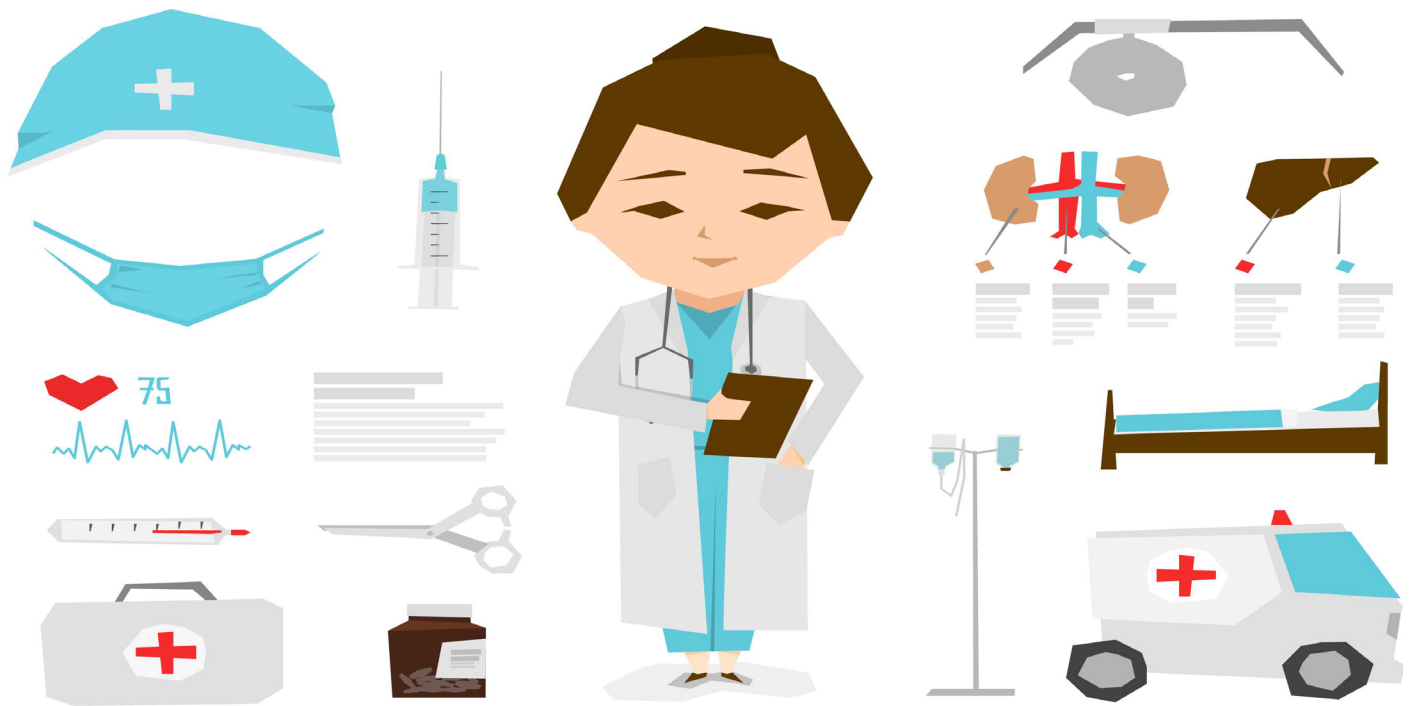
MECHANIC	LAWYER	WRITER	TAXI DRIVER
MILKMAN	MUSICIAN	DIRECTOR	VET
PILOT	SHEPHERD	GARDENER	FLIGHT ATTENDANT
TRUCK DRIVER (F)	BAKER (F)	PAINTRESS	RECEPTIONIST



Campesino



Policía



Médico



Bombero



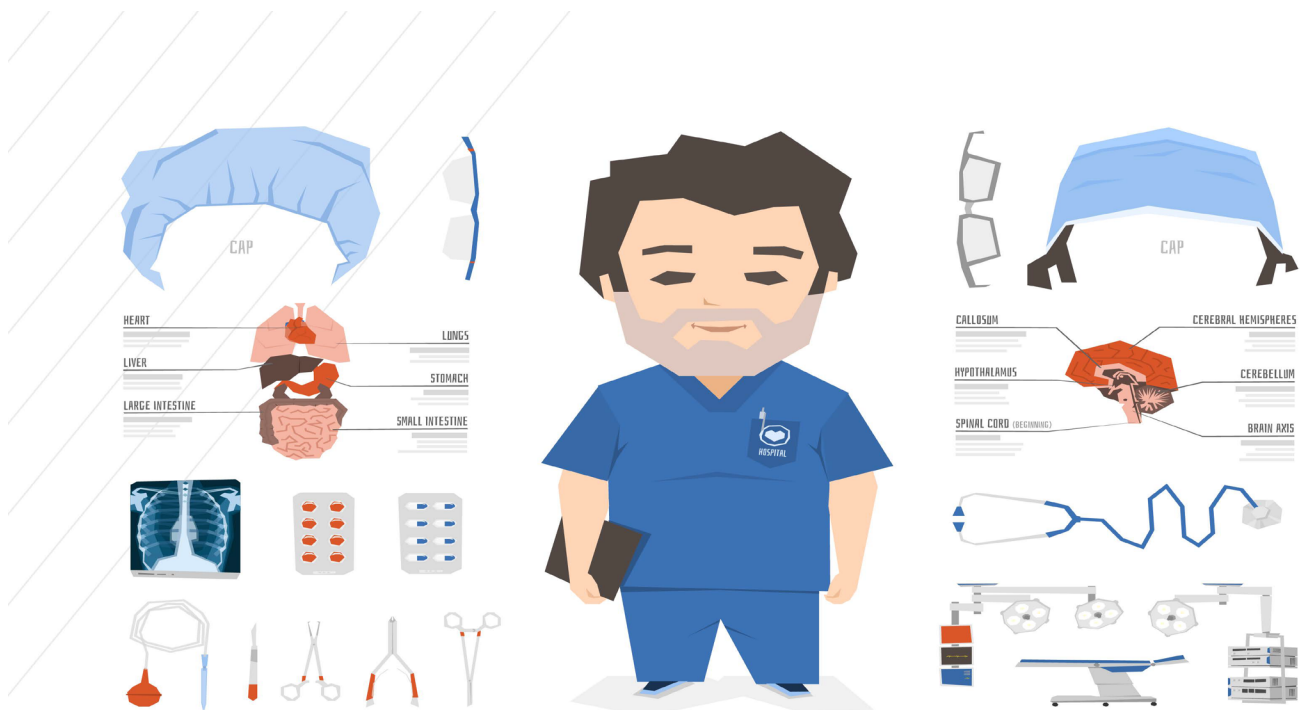
Camionero



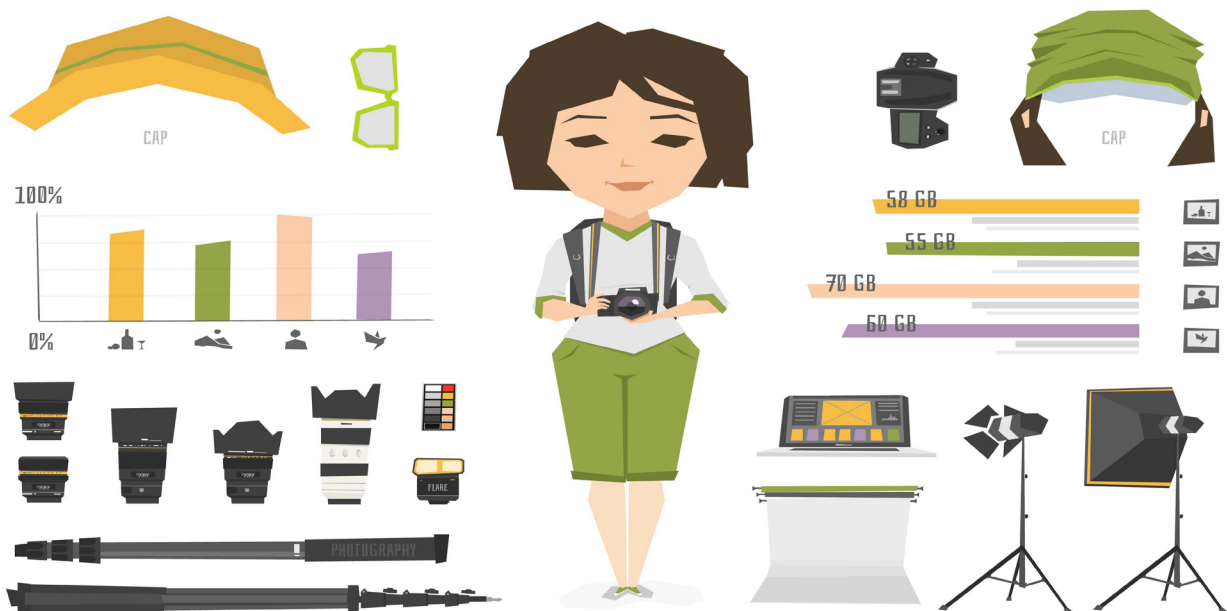
Diseñador



(la) Gerente



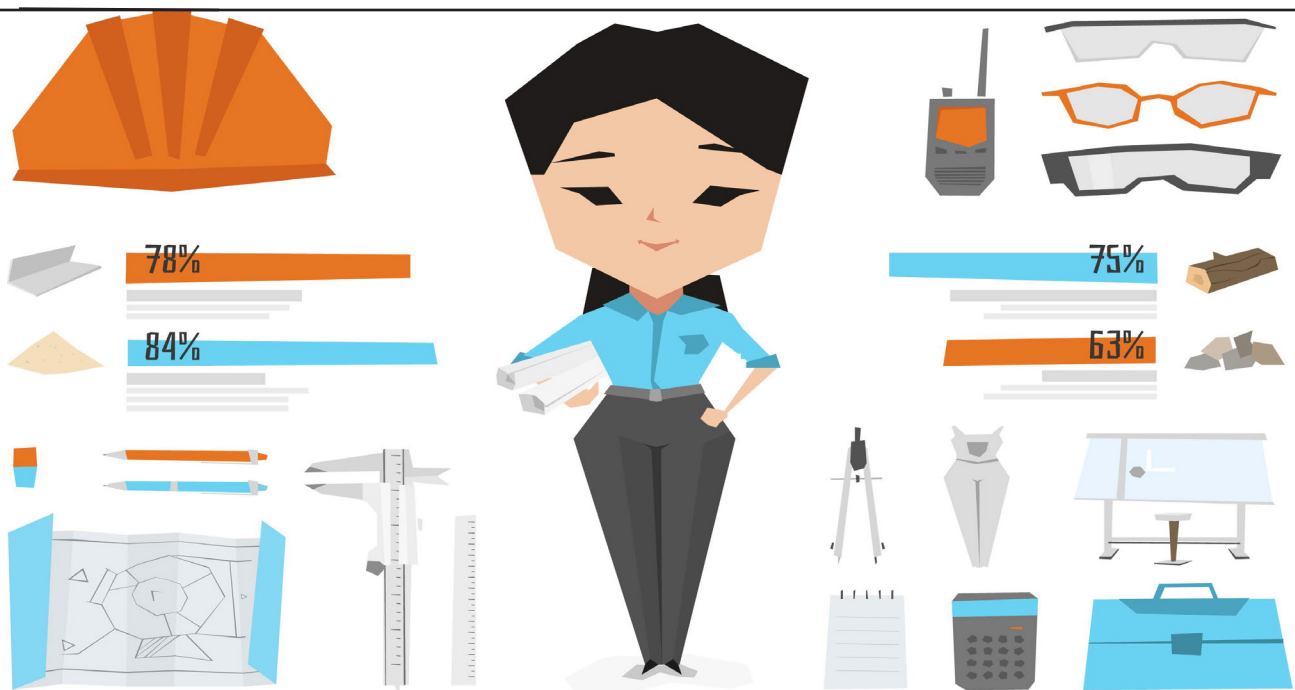
Cirujano



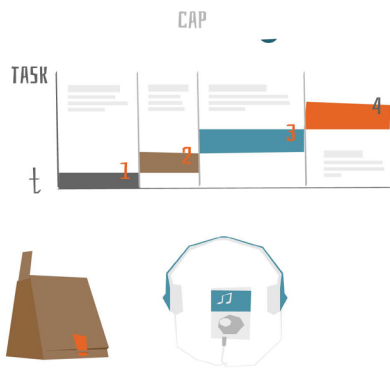
Fotógrafa



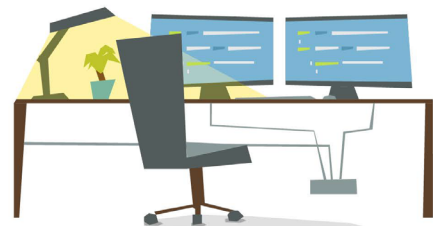
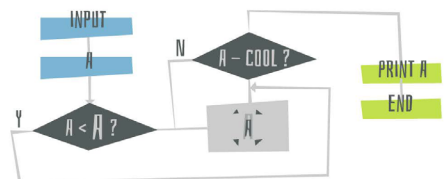
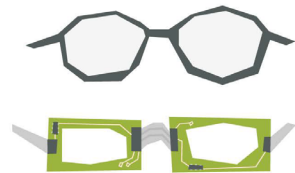
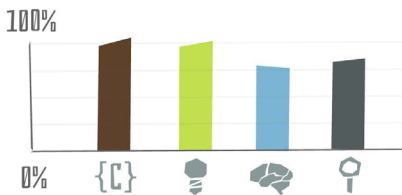
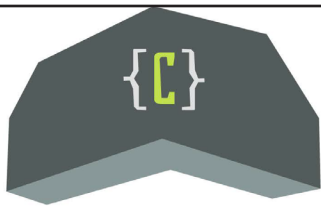
Dentista



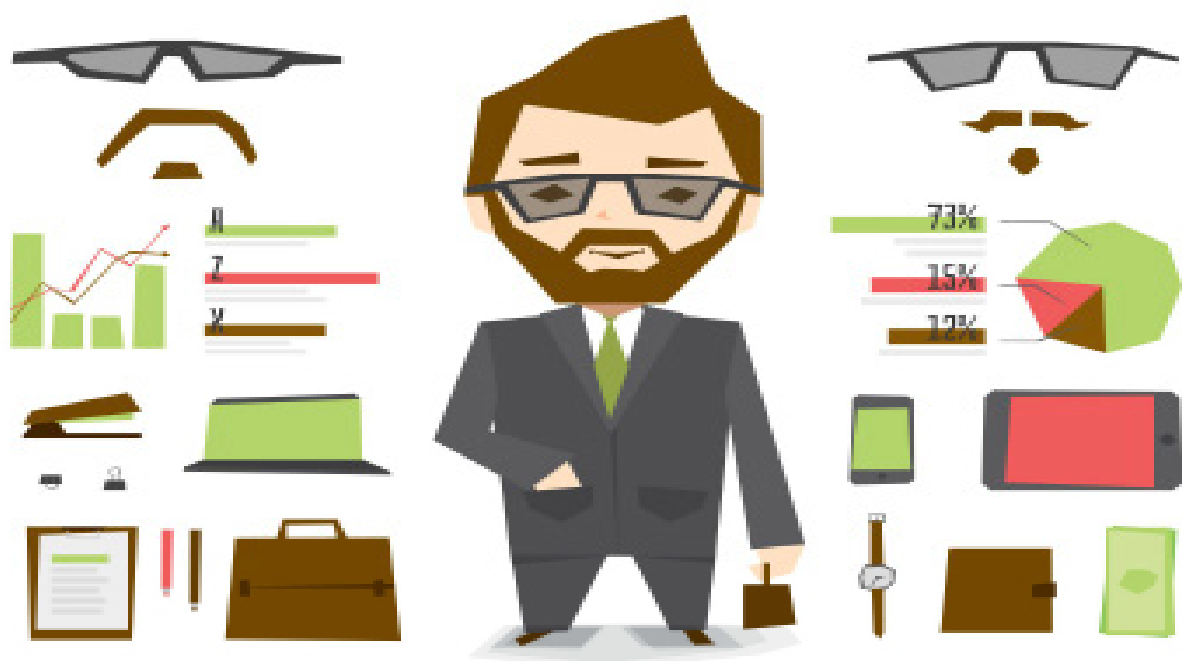
Ingeniera



Recepcionista



Programador



Empresario



Cocinero